

MOVING & STORAGE OF LAKE HAVASU CITY

Hwy 95 & N London Bridge Rd, Lake Havasu City, AZ 86404



MOVING & STORAGE OF LAKE HAVASU CITY

Hwy 95 & N London Bridge Rd, Lake Havasu City, AZ 86404



NATURAL COLORS PULLED
FROM LOCAL ENVIRONMENT

ARCHITECTURAL FENESTRATION
TO ENHANCE RETAIL UNIFORMITY
IN THE AREA



MOVING & STORAGE OF LAKE HAVASU CITY

Hwy 95 & N London Bridge Rd, Lake Havasu City, AZ 86404



ADVERTISING & MARKETING ASSOCIATES, INC.



ARCHITECTURAL DESIGN & FACILITY IMAGING

September 3, 2021

Conceptual renderings are subject to change and should not be implemented.

MOVING & STORAGE OF LAKE HAVASU CITY

Hwy 95 & N London Bridge Rd, Lake Havasu City, AZ 86404

3" THICK IMP MEETS SUSTAINABLE LEED STANDARDS BY PROVIDING SUPERIOR R-VALUE INSULATION FOR GREATER THERMAL EFFICIENCY

VERTICAL POP UP TO BRING ATTENTION AND EMPHASIZE THE MAIN ENTRANCE

ARCHITECTURAL PANELING 2" PROFILE, PROVIDES ARTICULATION, DEPTH AND TEXTURE TO THE BUILDING

NATURAL COLORS PULLED FROM LOCAL ENVIRONMENT

ARCHITECTURAL FENESTRATION TO ENHANCE RETAIL UNIFORMITY IN THE AREA

MOVING & STORAGE OF LAKE HAVASU CITY
Hwy 95 & N London Bridge Rd, Lake Havasu City, AZ 86404



EAST ELEVATION
Scale: 1" = 20'



EAST ELEVATION
Scale: 1" = 20'

MOVING & STORAGE OF LAKE HAVASU CITY
Hwy 95 & N London Bridge Rd, Lake Havasu City, AZ 86404



SOUTH ELEVATION

Scale: 1" = 20'



NORTH ELEVATION

Scale: 1" = 20'

MOVING & STORAGE OF LAKE HAVASU CITY
Hwy 95 & N London Bridge Rd, Lake Havasu City, AZ 86404



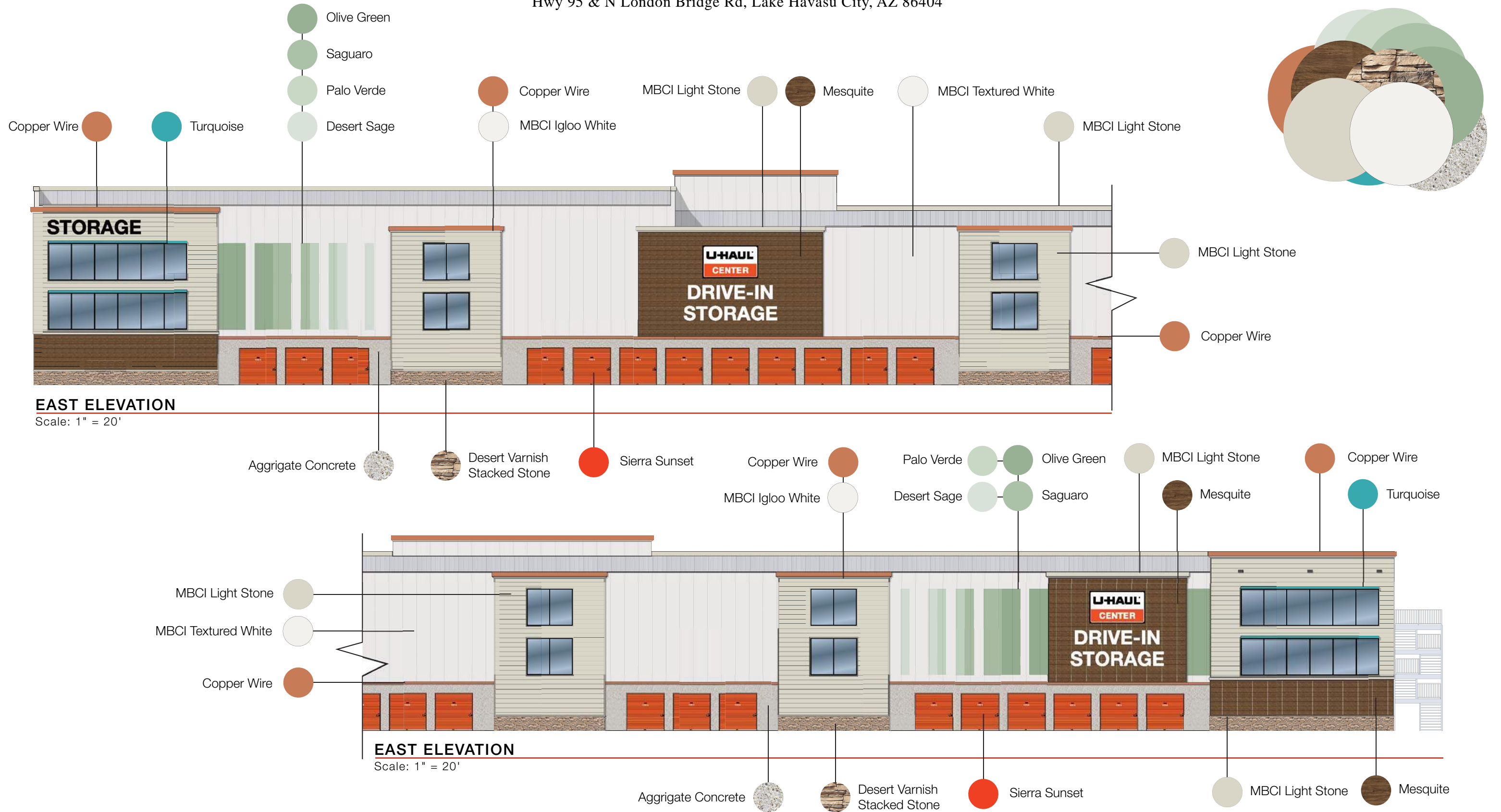
WEST ELEVATION
Scale: 1" = 20'



WEST ELEVATION
Scale: 1" = 20'

MOVING & STORAGE OF LAKE HAVASU CITY

Hwy 95 & N London Bridge Rd, Lake Havasu City, AZ 86404



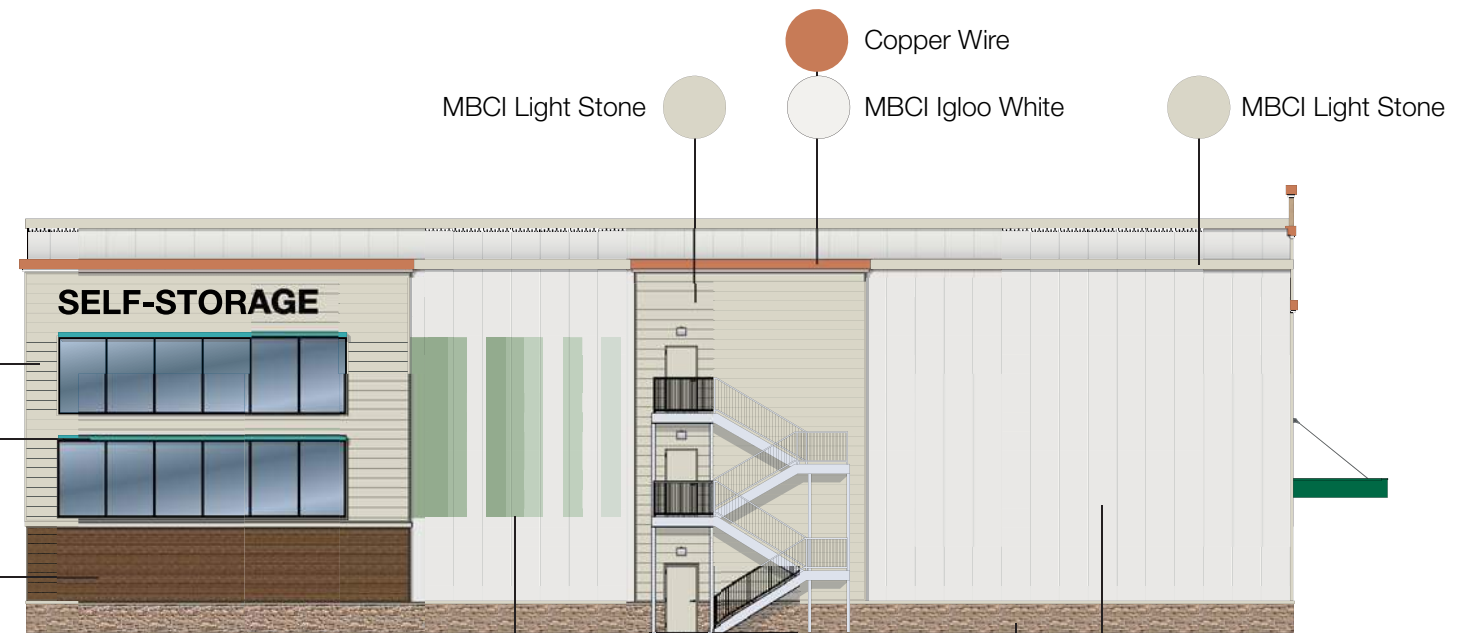
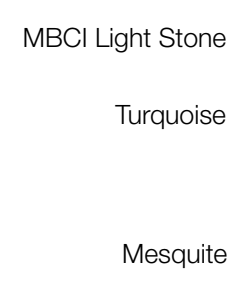
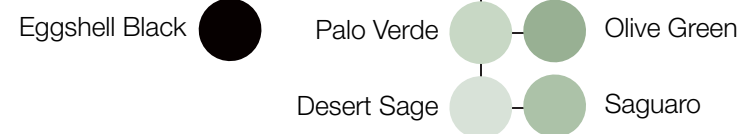
MOVING & STORAGE OF LAKE HAVASU CITY

Hwy 95 & N London Bridge Rd, Lake Havasu City, AZ 86404



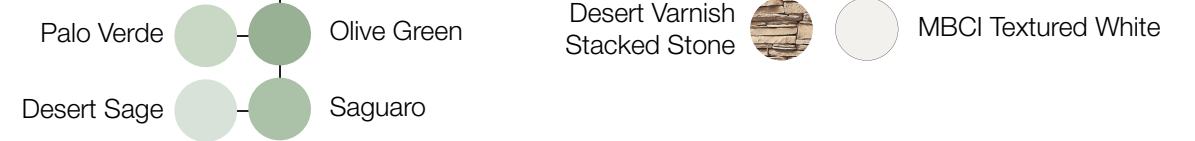
SOUTH ELEVATION

Scale: 1" = 20'



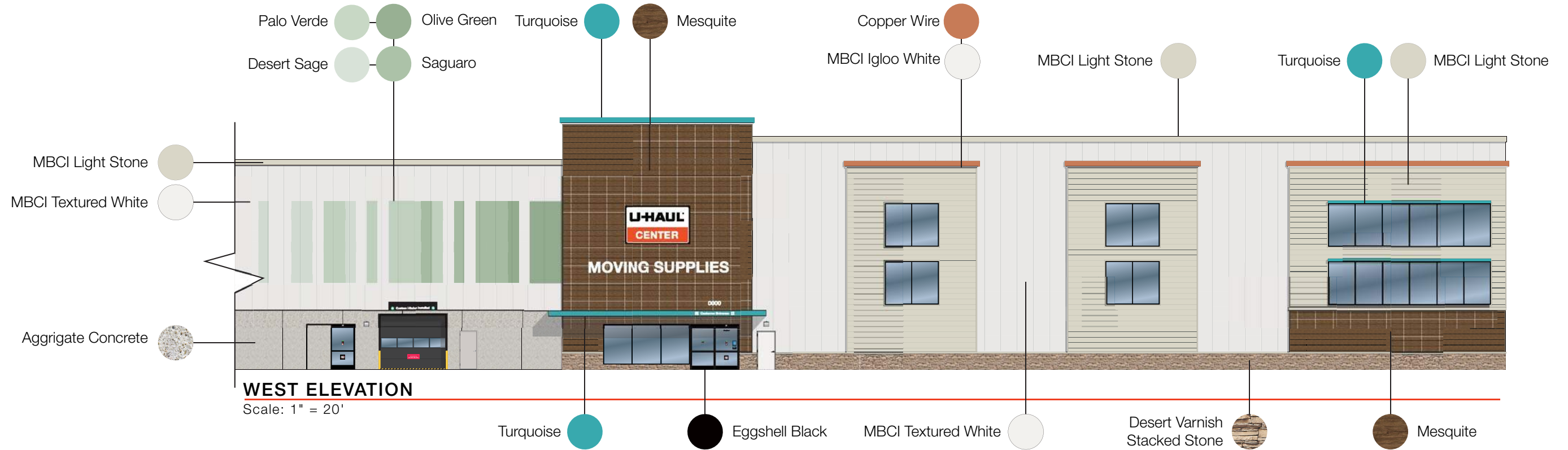
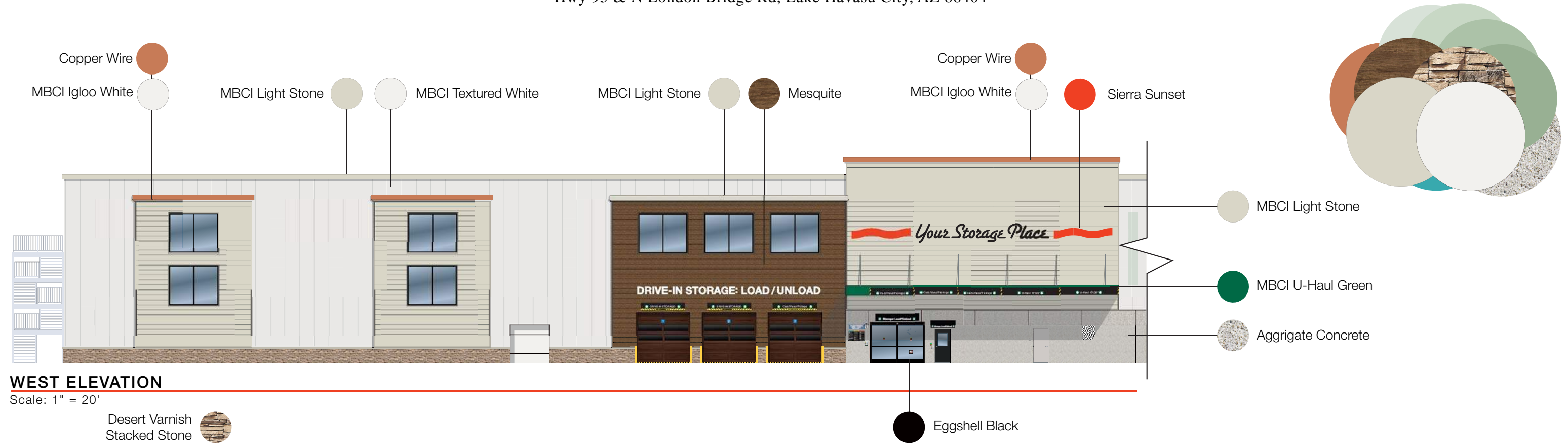
NORTH ELEVATION

Scale: 1" = 20'



MOVING & STORAGE OF LAKE HAVASU CITY

Hwy 95 & N London Bridge Rd, Lake Havasu City, AZ 86404



MOVING & STORAGE OF LAKE HAVASU CITY

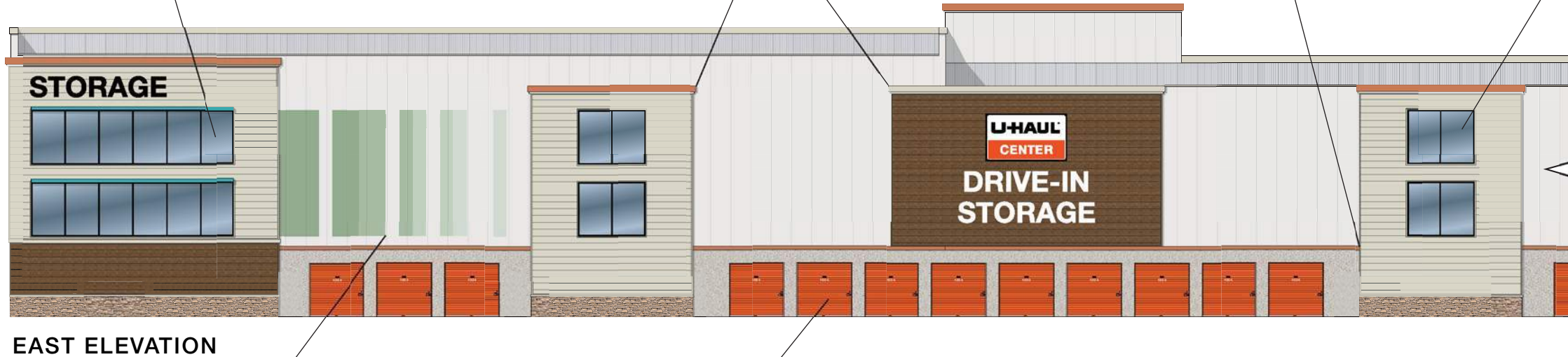
Hwy 95 & N London Bridge Rd, Lake Havasu City, AZ 86404

ARCHITECTURAL FENESTRATION
TO ENHANCE RETAIL UNIFORMITY
IN THE AREA.

ARCHITECTURAL POP OUTS
PROVIDES ARTICULATION TO
THE ELEVATION

CHANGE IN MATERIALS TO PROVIDE
ARTICULATION TO THE ELEVATION

FAUX WINDOWS TO
PROVIDE MIX USE LOOK



EAST ELEVATION

Scale: 1" = 20'

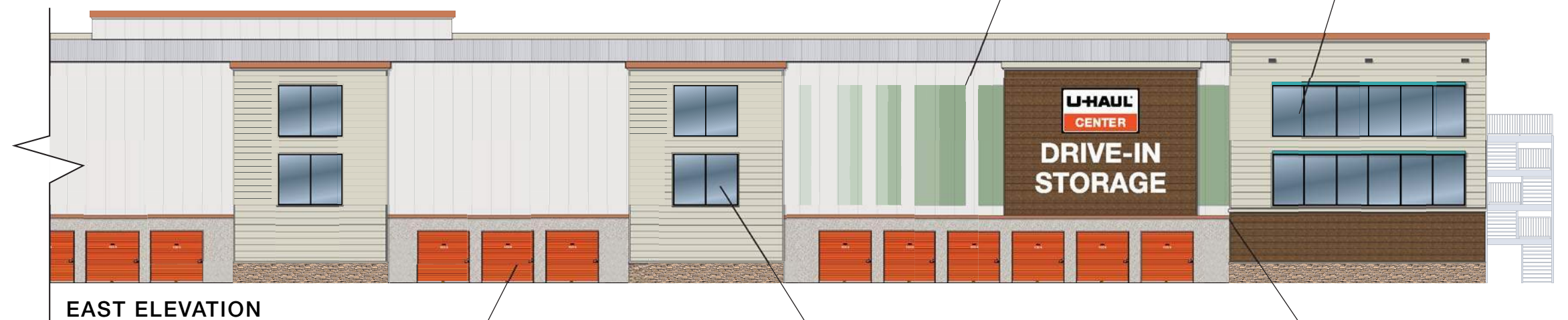
CHANGE IN PAINT TO PROVIDE
ARTICULATION TO THE ELEVATION

ARCHITECTURAL DETAILS

CHANGE IN PAINT TO PROVIDE
ARTICULATION TO THE ELEVATION

ARCHITECTURAL FENESTRATION
TO ENHANCE RETAIL UNIFORMITY
IN THE AREA.

ARCHITECTURAL DETAILS



EAST ELEVATION

Scale: 1" = 20'

ARCHITECTURAL DETAILS

FAUX WINDOWS TO
PROVIDE MIX USE LOOK

CHANGE IN MATERIALS TO PROVIDE
ARTICULATION TO THE ELEVATION



ADVERTISING & MARKETING ASSOCIATES, INC.

ARCHITECTURAL DESIGN & FACILITY IMAGING

September 3, 2021

Conceptual renderings are subject to change and should not be implemented.

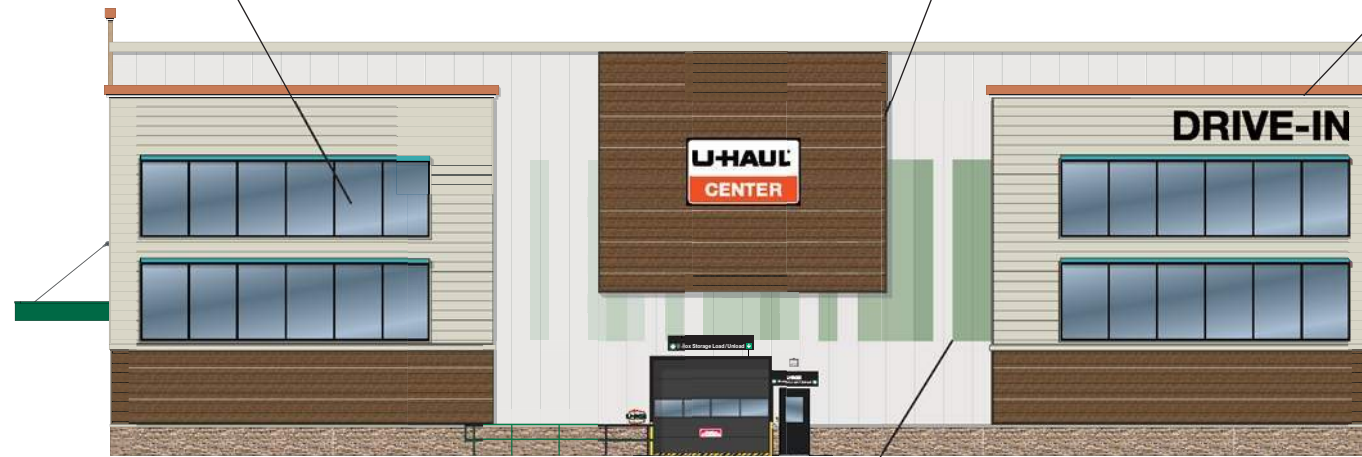
MOVING & STORAGE OF LAKE HAVASU CITY

Hwy 95 & N London Bridge Rd, Lake Havasu City, AZ 86404

ARCHITECTURAL FENESTRATION
TO ENHANCE RETAIL UNIFORMITY
IN THE AREA.

CHANGE IN MATERIALS TO PROVIDE
ARTICULATION TO THE ELEVATION

ARCHITECTURAL POP OUTS
PROVIDES ARTICULATION TO
THE ELEVATION



SOUTH ELEVATION

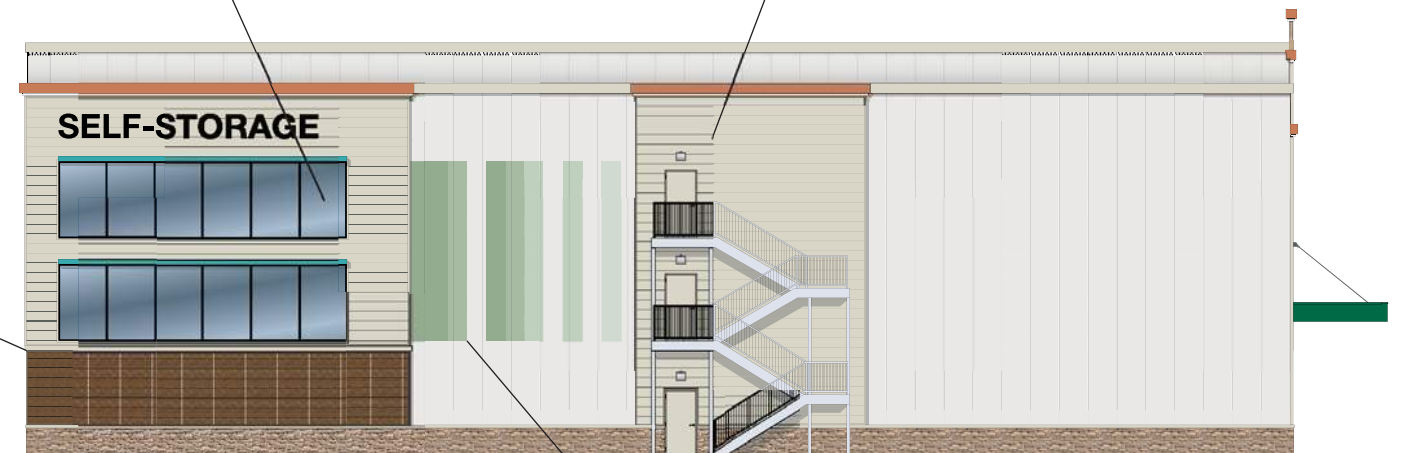
Scale: 1" = 20'

CHANGE IN PAINT TO PROVIDE
ARTICULATION TO THE ELEVATION

ARCHITECTURAL FENESTRATION
TO ENHANCE RETAIL UNIFORMITY
IN THE AREA.

ARCHITECTURAL POP OUTS
PROVIDES ARTICULATION TO
THE ELEVATION

CHANGE IN MATERIALS TO PROVIDE
ARTICULATION TO THE ELEVATION



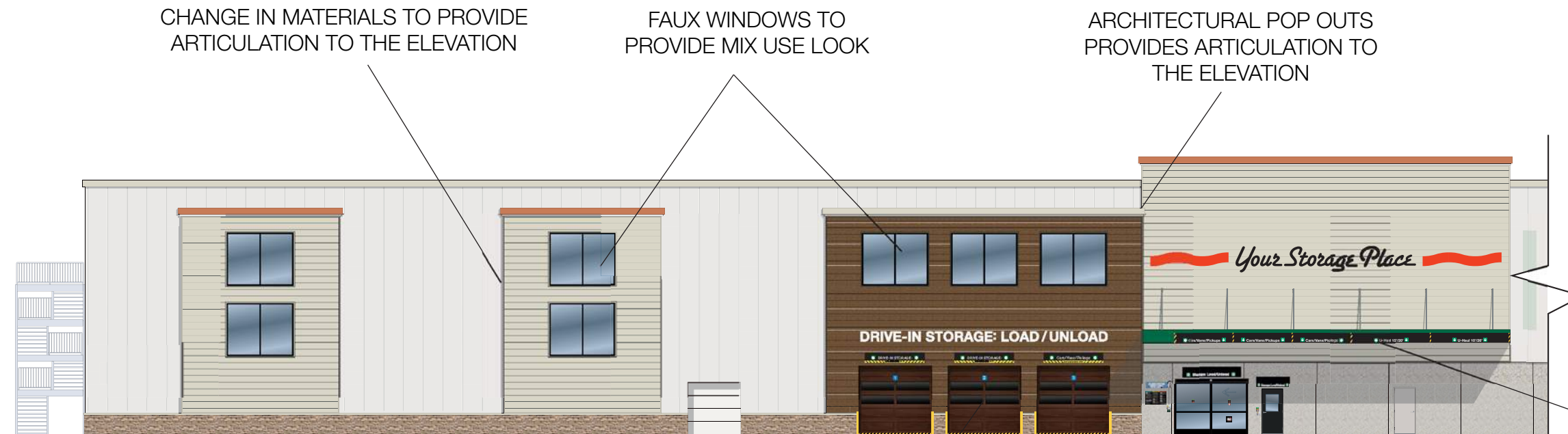
NORTH ELEVATION

Scale: 1" = 20'

CHANGE IN PAINT TO PROVIDE
ARTICULATION TO THE ELEVATION

MOVING & STORAGE OF LAKE HAVASU CITY

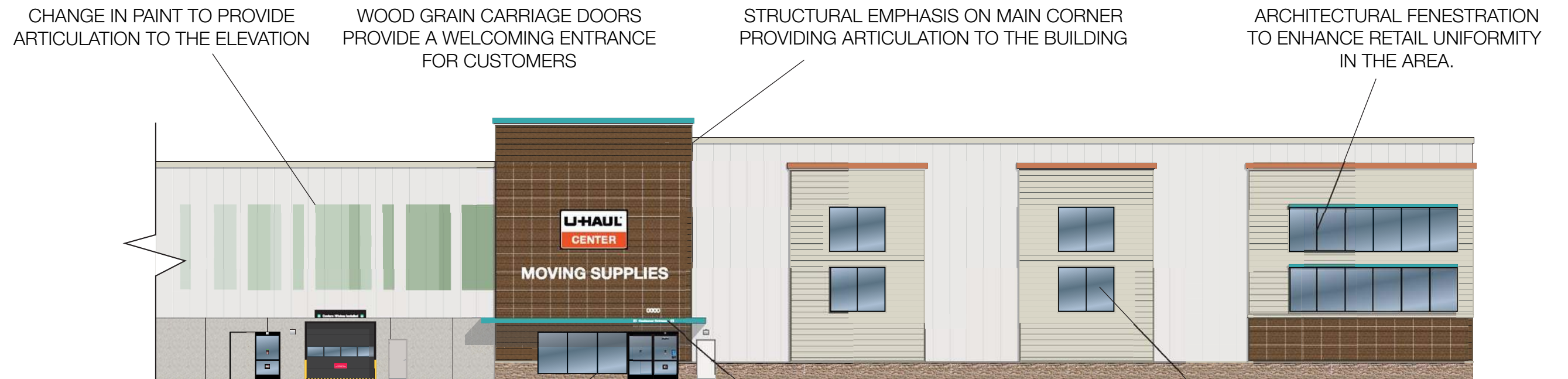
Hwy 95 & N London Bridge Rd, Lake Havasu City, AZ 86404



WEST ELEVATION
Scale: 1" = 20'



WOOD GRAIN CARRIAGE DOORS



WEST ELEVATION
Scale: 1" = 20'

GENEROUS USE OF GLASS
NEAR STOREFRONT

PROJECTION CREATES ARCHITECTURAL
INTEREST ABOVE CUSTOMER ENTRANCE

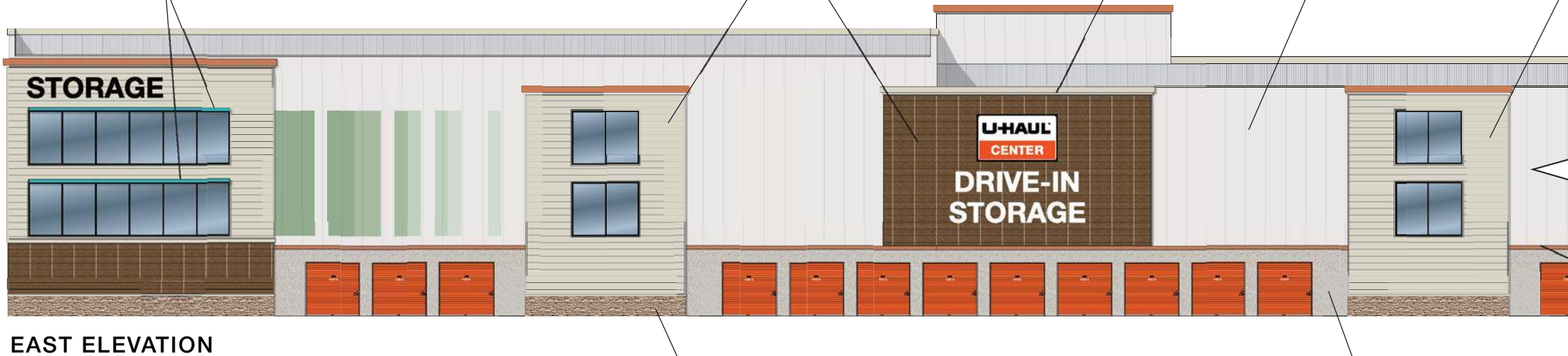
FAUX WINDOWS TO
PROVIDE MIX USE LOOK

Versa-Seam

Versa-Seam is a rainscreen style system that requires a water and air barrier system behind it. The panel forms architectural shadow lines in its horizontal installation and is available with three optional reveal or shadow line configurations and optional end folds.



6"H x 3"D
ARCHITECTURAL DETAIL



EAST ELEVATION

Scale: 1" = 20'

ATAS VESRA-SEAM 12"W
HORIZONTAL PANELING
MATERIAL DEPTH 3/4" REVEAL

FAUX STONE

MBCI TUFF WALL
STUCCO EMBOSSED
VERTICAL PANELING

AGGRIGATED
TILT WALL CONCRETE

ATAS VESRA-SEAM 12"W
HORIZONTAL PANELING
MATERIAL DEPTH 3/4" REVEAL

6"H x 3"D
ARCHITECTURAL DETAIL

METAL TRIM 6"H



EAST ELEVATION

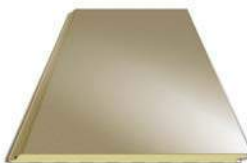
Scale: 1" = 20'

ATAS VESRA-SEAM 12"W
HORIZONTAL PANELING
MATERIAL DEPTH 3/4" REVEAL

FAUX STONE

AGGRIGATED
TILT WALL CONCRETE

TUFF WALL® / TUFF-CAST™



The Tuff Wall® and Tuff-Cast™ panels are designed for exterior applications where an aggregate look is preferred. The exterior skin of the panel is embossed flat, while the interior skin has the embossed light Mesa profile. Tuff Wall® has a finish similar to stucco, providing the masonry look many designers and communities desire. The Tuff-Cast™ exterior is finished with look of precast concrete.

Product Specifications

- Application: Wall (vertical and horizontal)
- Gauges: Exterior: 24, 22 | Interior: 26, 24, 22
- Widths: 36", 42"
- Thicknesses: 2", 2 1/2", 3", 4", 5", 6"

- Length: 8'-0" to 32'-0" for horizontal textured
8'-0" to 40'-0" for vertical textured
- Panel Attachment: Concealed Fastening System
- Standard Coatings: Applied Finishes only

1/2" and 6" CF Tuff-Cast and Tuff Wall available with Mesa,
nominal 1/2" deep profile only

ADVERTISING & MARKETING ASSOCIATES, INC.



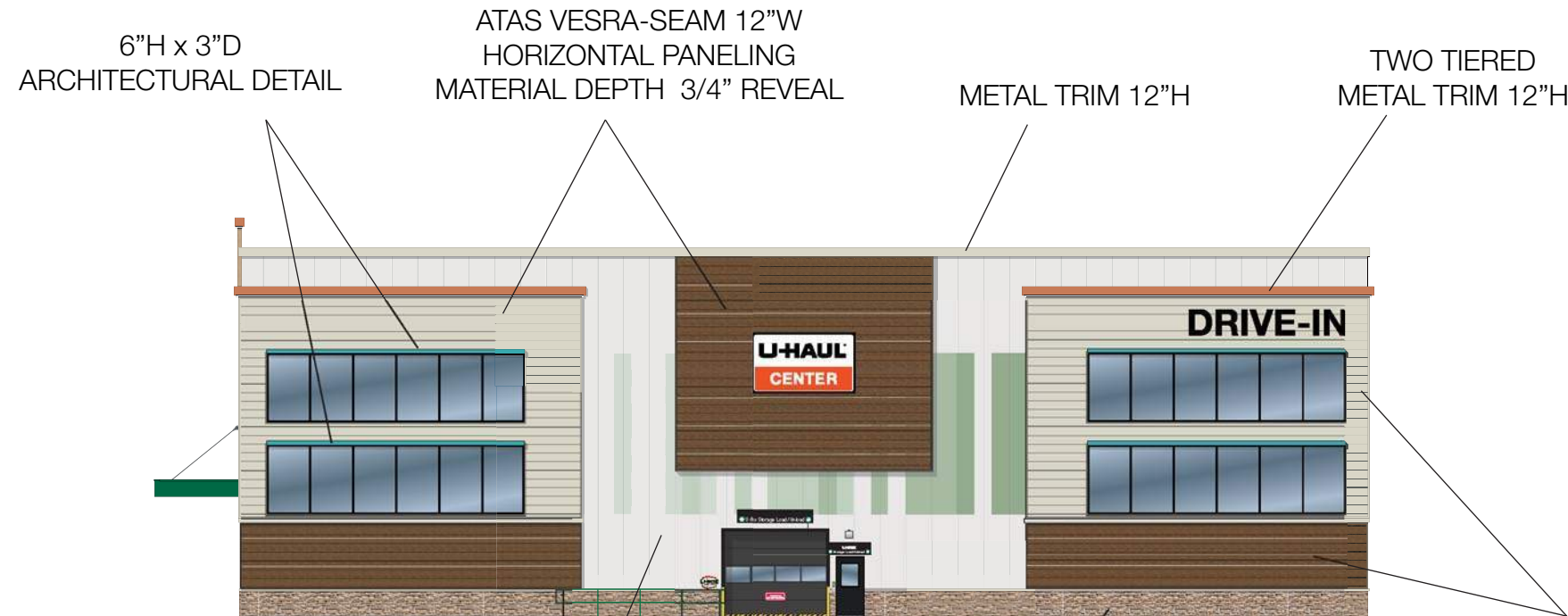
ARCHITECTURAL DESIGN & FACILITY IMAGING

September 3, 2021

Conceptual renderings are subject to change and should not be implemented.

MOVING & STORAGE OF LAKE HAVASU CITY

Hwy 95 & N London Bridge Rd, Lake Havasu City, AZ 86404



SOUTH ELEVATION

Scale: 1" = 20'

TUFF WALL® / TUFF-CAST™



The Tuff Wall® and Tuff-Cast™ panels are designed for exterior applications where an aggregate look is preferred. The exterior skin of the panel is embossed flat, while the interior skin has the embossed light Mesa profile. Tuff Wall® has a finish similar to stucco, providing the masonry look many designers and communities desire. The Tuff-Cast™ exterior is finished with look of precast concrete.

Product Specifications

- Application: Wall (vertical and horizontal)
- Gauges: Exterior: 24, 22 | Interior: 26, 24, 22
- Widths: 36", 42"
- Thicknesses: 2", 2 1/2", 3", 4", 5", 6"
- Length: 8'-0" to 32'-0" for horizontal textured
8'-0" to 40'-0" for vertical textured
- Panel Attachment: Concealed Fastening System
- Standard Coatings: Applied Finishes only

*5" and 6" CF Tuff-Cast and Tuff Wall available with Mesa, nominal 1/2" deep profile only



ATAS VESRA-SEAM 12" W
HORIZONTAL PANELING
MATERIAL DEPTH 3/4" REVEAL

TWO TIERED
METAL TRIM 12"H

MBCI TUFF WALL
STUCCO EMBOSSED
VERTICAL PANELING

FAUX STONE

6"H x 3"D
ARCHITECTURAL DETAIL



NORTH ELEVATION

Scale: 1" = 20'

ATAS VESRA-SEAM 12" W
HORIZONTAL PANELING
MATERIAL DEPTH 3/4" REVEAL

FAUX STONE

MBCI TUFF WALL
STUCCO EMBOSSED
VERTICAL PANELING

Versa-Seam

Versa-Seam is a rainscreen style system that requires a water and air barrier system behind it. The panel forms architectural shadow lines in its horizontal installation and is available with three optional reveal or shadow line configurations and optional end folds.



Versa-Seam

Versa-Seam is a rainscreen style system that requires a water and air barrier system behind it. The panel forms architectural shadow lines in its horizontal installation and is available with three optional reveal or shadow line configurations and optional end folds.

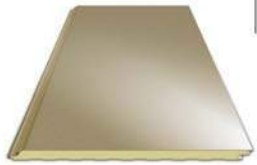


U-HAUL

MOVING & STORAGE OF LAKE HAVASU CITY

Hwy 95 & N London Bridge Rd, Lake Havasu City, AZ 86404

TUFF WALL® / TUFF-CAST™

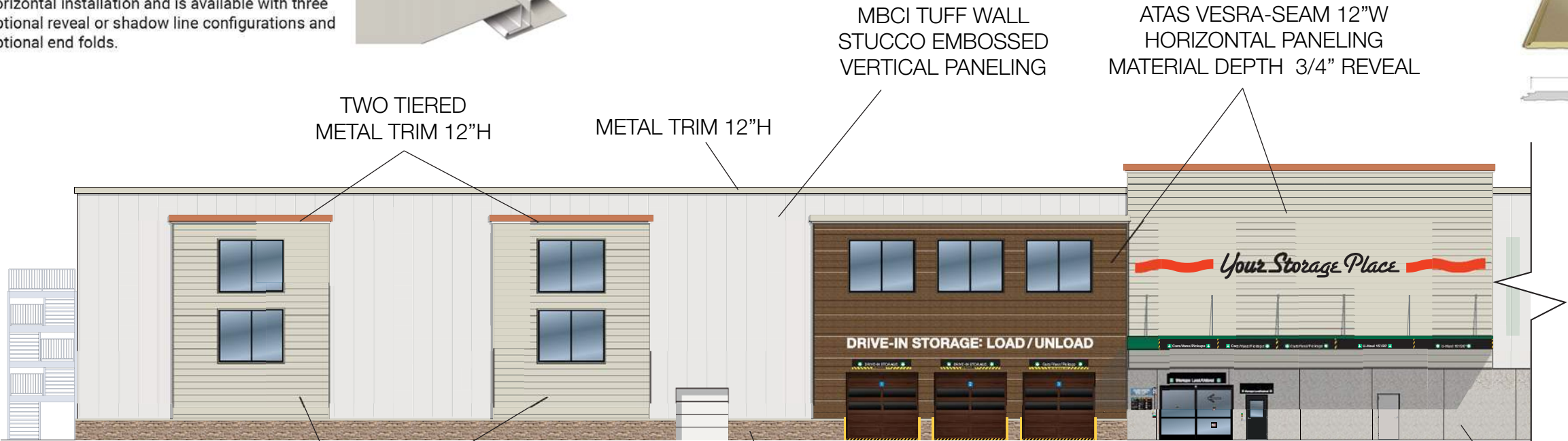


The Tuff Wall® and Tuff-Cast™ panels are designed for exterior applications where an aggregate look is preferred. The exterior skin of the panel is embossed flat, while the interior skin has the embossed light Mesa profile. Tuff Wall® has a finish similar to stucco, providing the masonry look many designers and communities desire. The Tuff-Cast™ exterior is finished with look of precast concrete.

Product Specifications

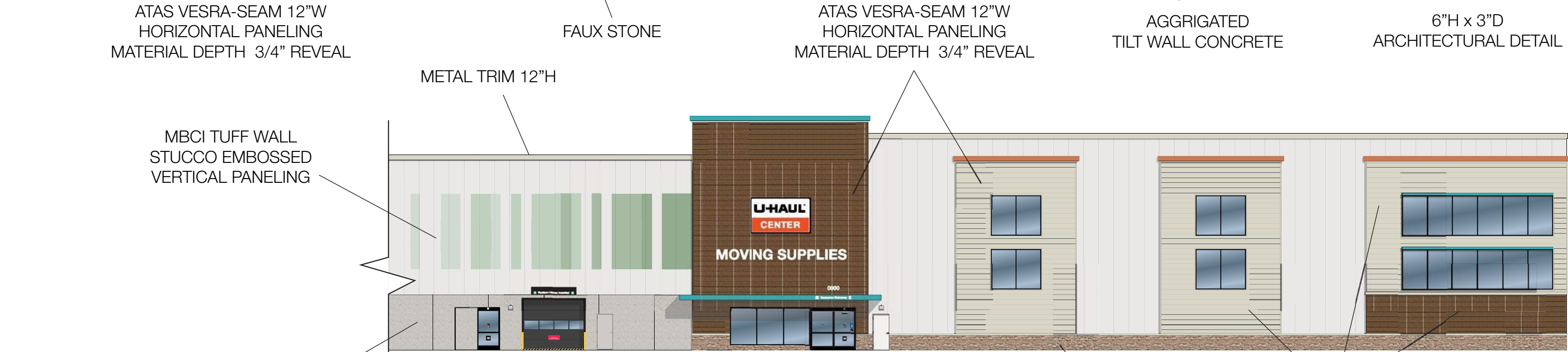
- Application: Wall (vertical and horizontal)
- Gauges: Exterior: 24, 22 | Interior: 26, 24, 22
- Widths: 36", 42"
- Thicknesses: 2", 2 1/2", 3", 4", 5", 6"
- Length: 8'-0" to 32'-0" for horizontal textured
8'-0" to 40'-0" for vertical textured
- Panel Attachment: Concealed Fastening System
- Standard Coatings: Applied Finishes only

*5" and 6" CF Tuff-Cast and Tuff Wall available with Mesa, nominal 1/2" deep profile only



WEST ELEVATION

Scale: 1" = 20'



WEST ELEVATION

Scale: 1" = 20'

ADVERTISING & MARKETING ASSOCIATES, INC.



ARCHITECTURAL DESIGN & FACILITY IMAGING

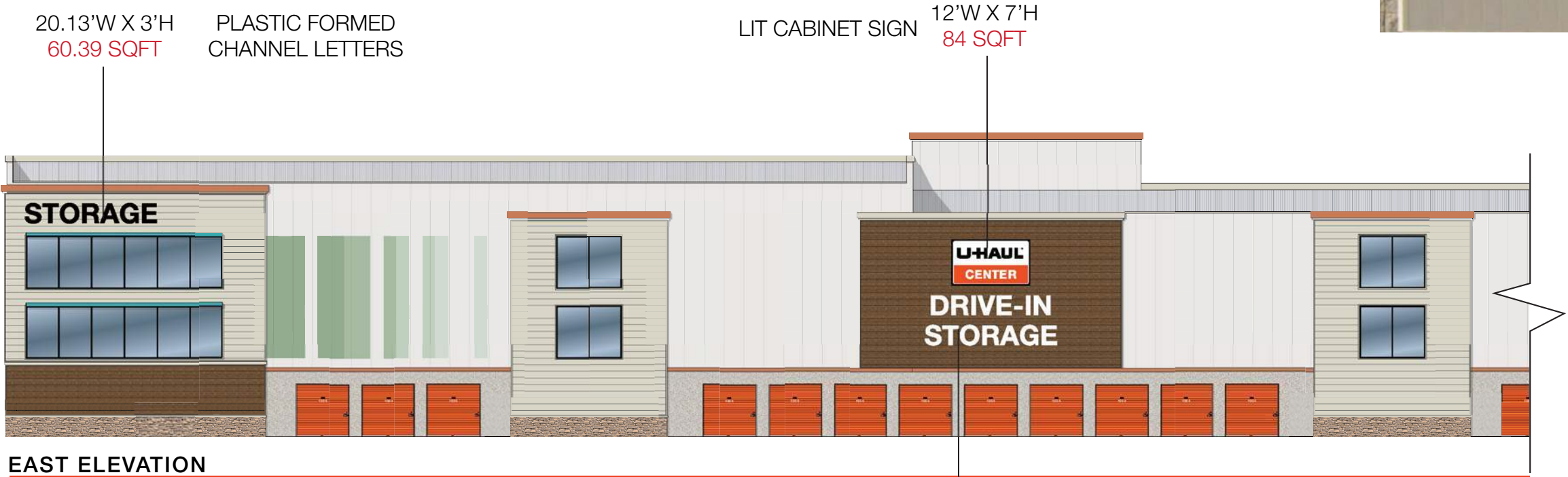
September 3, 2021

Conceptual renderings are subject to change and should not be implemented.

MOVING & STORAGE OF LAKE HAVASU CITY
Hwy 95 & N London Bridge Rd, Lake Havasu City, AZ 86404



BLACK PLASTIC FORMED
CHANNEL LETTER EXAMPLE



EAST ELEVATION
Scale: 1" = 20'

18.23'W X 3'H 54.69 SQFT PLASTIC FORMED CHANNEL LETTERS
20.13'W X 3'H 60.39 SQFT
12'W X 7'H 84 SQFT LIT CABINET SIGN



EAST ELEVATION
Scale: 1" = 20'

18.23'W X 3'H 54.69 SQFT PLASTIC FORMED CHANNEL LETTERS
20.13'W X 3'H 60.39 SQFT



LIT CABINET SIGN EXAMPLE



MOVING & STORAGE OF LAKE HAVASU CITY
Hwy 95 & N London Bridge Rd, Lake Havasu City, AZ 86404



BLACK PLASTIC FORMED
CHANNEL LETTER EXAMPLE



SOUTH ELEVATION
Scale: 1" = 20'

LIT CABINET SIGN EXAMPLE



NORTH ELEVATION
Scale: 1" = 20'



ADVERTISING & MARKETING ASSOCIATES, INC.

ARCHITECTURAL DESIGN & FACILITY IMAGING



MOVING & STORAGE OF LAKE HAVASU CITY
Hwy 95 & N London Bridge Rd, Lake Havasu City, AZ 86404

PLASTIC FORMED CHANNEL LETTERS 37.43'W X 1.5'H 11 GAUGE STEEL BLACK POWDER COAT SIGN 27.4'W X 4'H

56.14 SQFT 109.6 SQFT



11 GAUGE STEEL BLACK POWDER COAT SIGN EXAMPLE



WEST ELEVATION
Scale: 1" = 20'

LIT CABINET SIGN 12'W X 7'H

84 SQFT



WEST ELEVATION
Scale: 1" = 20'

PLASTIC FORMED CHANNEL LETTERS 25.79'W X 2'H

51.58 SQFT

LIT CABINET SIGN EXAMPLE



ADVERTISING & MARKETING ASSOCIATES, INC.

ARCHITECTURAL DESIGN & FACILITY IMAGING