

**EXHIBIT "A"**  
**EASEMENT ABANDONMENT**  
**ON**

LOT 12, BLOCK 2 OF TRACT 2322, LAKE HAVASU CITY,  
BEING A SUBDIVISION OF A PORTION OF SECTION 14, TOWNSHIP 13 NORTH,  
RANGE 20 WEST, GILA & SALT RIVER MERIDIAN, MOHAVE COUNTY, ARIZONA.

A PORTION OF LOT 12, BLOCK 2, TRACT 2322, LAKE HAVASU CITY, BEING  
A SUBDIVISION OF A PORTION OF SECTION 14, TOWNSHIP 13 NORTH,  
RANGE 20 WEST, GILA & SALT RIVER MERIDIAN, MOHAVE COUNTY, ARIZONA.  
BEING MORE PARTICULARLY DESCRIBED AS FOLLOWS:

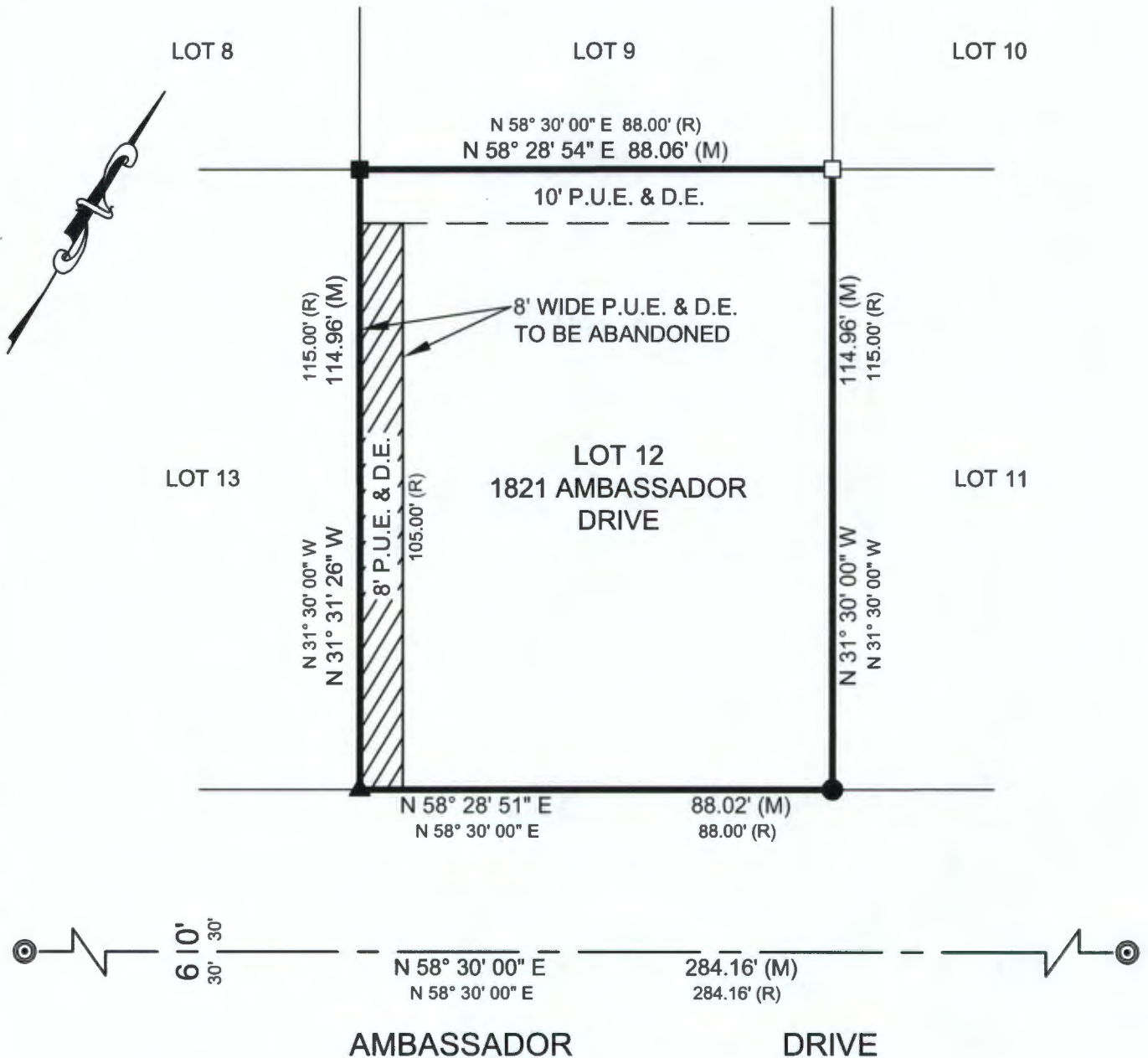
THE ENTIRE 8' PUBLIC UTILITY EASEMENT AND DRAINAGE EASEMENT ALONG  
THE COMMON PROPERTY OF LOTS 12 & 13, EXCLUDING THE REAR 10.00 FEET.

THE ABOVE DESCRIBED AREA CONTAINS APPROXIMATELY 840 S.F.



# EXHIBIT "B" EASEMENT ABANDONMENT ON

LOT 12, BLOCK 2 OF TRACT 2322, LAKE HAVASU CITY,  
BEING A SUBDIVISION OF A PORTION OF SECTION 14, TOWNSHIP 13 NORTH,  
RANGE 20 WEST, GILA & SALT RIVER MERIDIAN, MOHAVE COUNTY, ARIZONA.



ACCURATE PROFESSIONAL  
LAND SURVEYING, INC.  
P.O. BOX 3722  
LAKE HAVASU CITY, AZ 86405  
(928) 505-2570



SCALE: 1"=30'

JOB No.  
2021-0415 EASE  
PAGE 2 OF 2