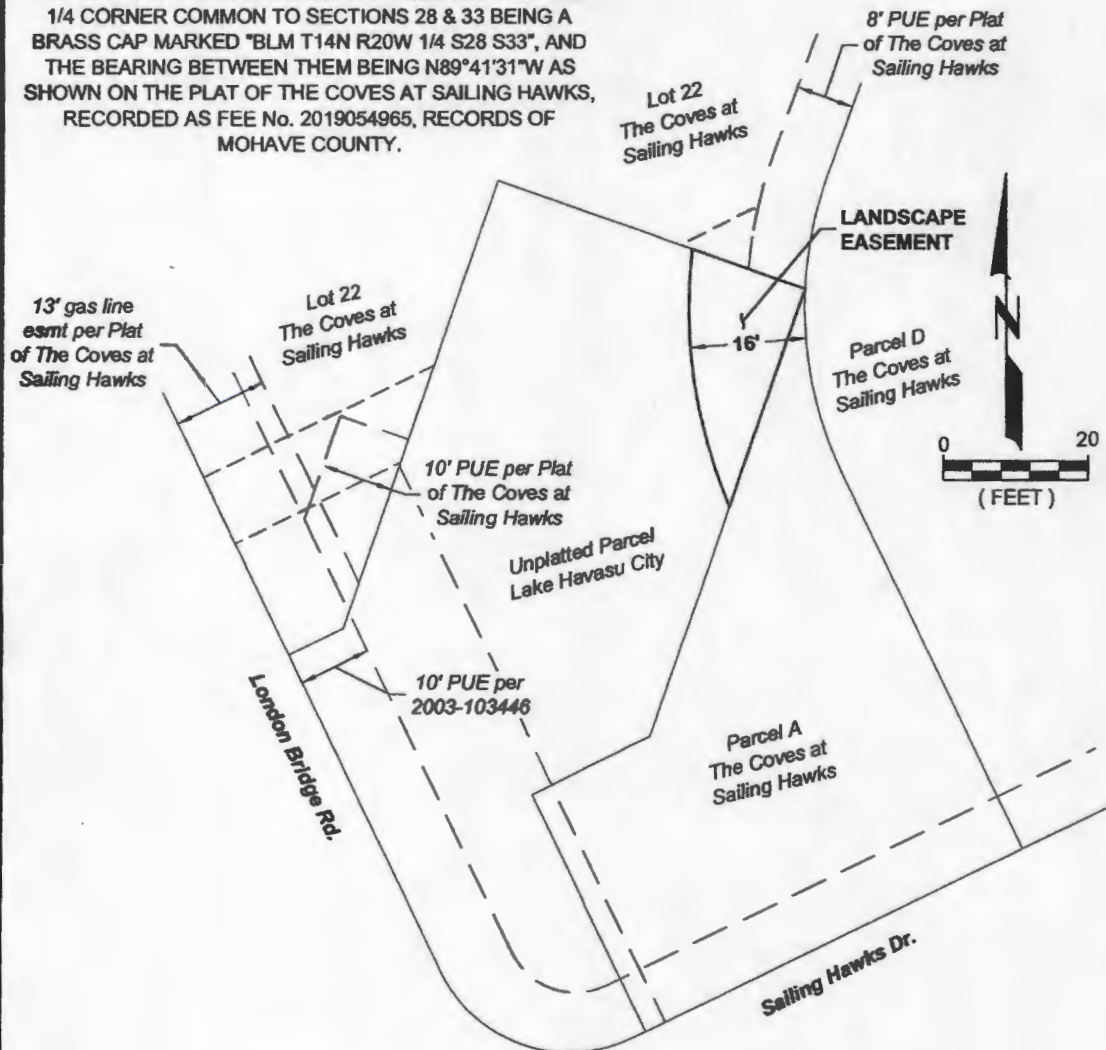


EXHIBIT A

A LANDSCAPE EASEMENT ACROSS AN UNPLATTED PARCEL IN SECTION 33, T14N, R20W, G&SRM, LAKE HAVASU CITY, ARIZONA

BASIS OF BEARING

BEARINGS FOR THIS EXHIBIT ARE BASED ON THE NORTH LINE OF THE NE1/4NW1/4 SECTION 33, THE WEST 1/16 CORNER COMMON TO SECTIONS 28 & 33 BEING A BRASS CAP MARKED "BLM T14N R20W W1/16 S28 S33" AND THE 1/4 CORNER COMMON TO SECTIONS 28 & 33 BEING A BRASS CAP MARKED "BLM T14N R20W 1/4 S28 S33", AND THE BEARING BETWEEN THEM BEING N89°41'31"W AS SHOWN ON THE PLAT OF THE COVES AT SAILING HAWKS, RECORDED AS FEE No. 2019054965, RECORDS OF MOHAVE COUNTY.



DESCRIPTION - LANDSCAPE EASEMENT

A landscape easement being that portion of an unplatted parcel in Section 33, T14N, R20W, G&SRM, Lake Havasu City, Arizona, situated within 16 feet of the east line of Parcel D of The Coves at Sailing Hawks subdivision.



Advanced Engineering and Environmental Services, Inc.
94 Acoma Blvd S #102, Lake Havasu City, AZ 86403

Ph: 701-225-9636 Web: www.AE2S.com
W:\S\Sailing Hawks Real Estate Holdings, LLC\14634-2019-000 The Coves at Sailing Hawks\CAD Dwg\Survey\Easements\Esmt-Landscape-Outlot.dwg