

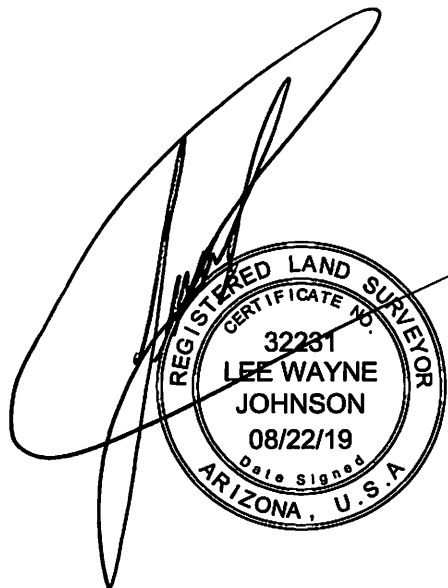
**EXHIBIT "A"**  
**EASEMENT ABANDONMENT**  
**ON**

LOT 11, BLOCK 3 OF TRACT 2319, LAKE HAVASU CITY,  
BEING A SUBDIVISION OF A PORTION OF SECTION 14, TOWNSHIP 13 NORTH,  
RANGE 20 WEST, GILA & SALT RIVER MERIDIAN, MOHAVE COUNTY, ARIZONA.

A PORTION OF LOT 11, BLOCK 3, TRACT 2319, LAKE HAVASU CITY, BEING  
A SUBDIVISION OF A PORTION OF SECTION 14, TOWNSHIP 13 NORTH,  
RANGE 20 WEST, GILA & SALT RIVER MERIDIAN, MOHAVE COUNTY, ARIZONA.  
BEING MORE PARTICULARLY DESCRIBED AS FOLLOWS:

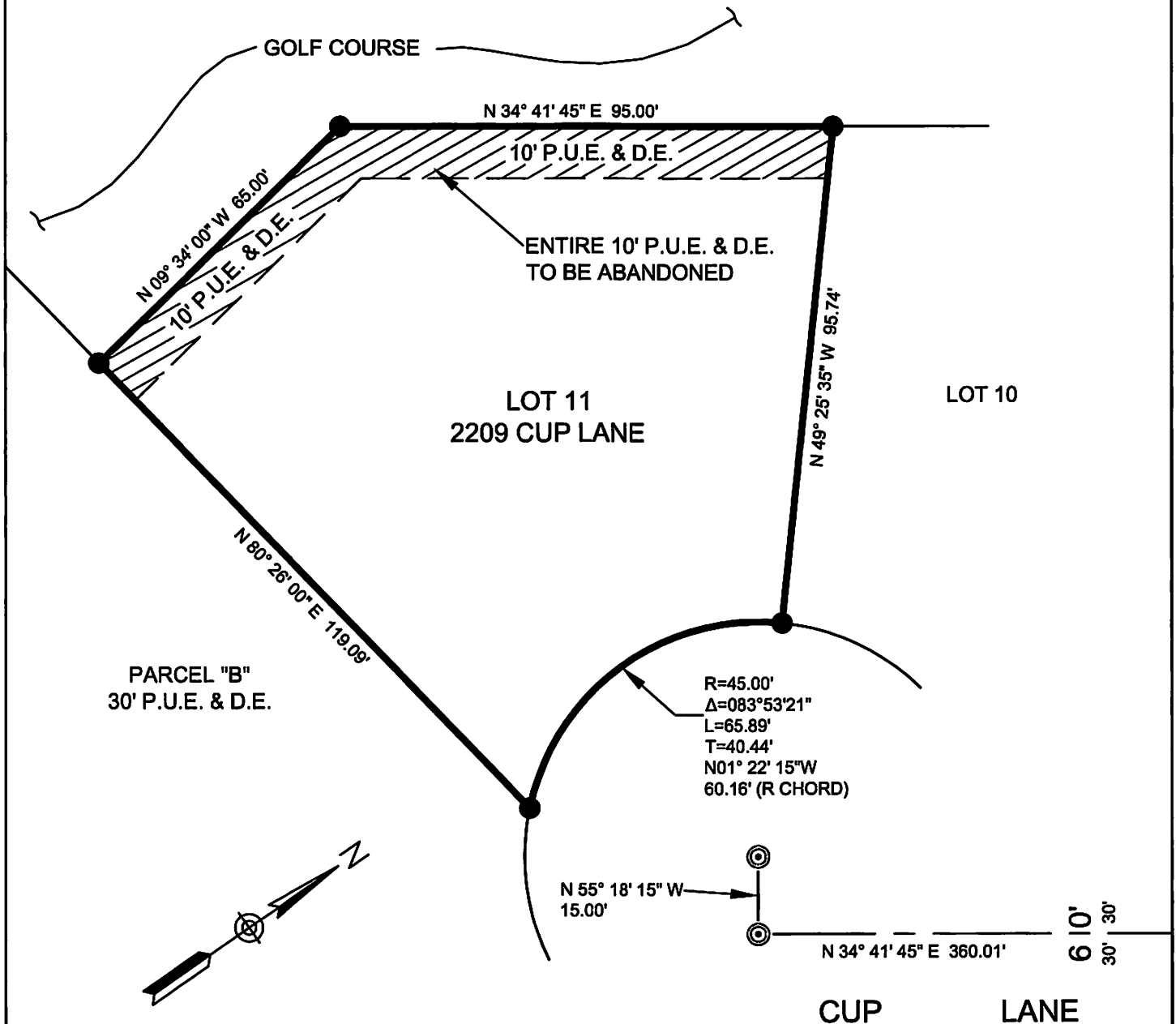
THE ENTIRE 10.00 FOOT PUBLIC UTILITY EASEMENT & DRAINAGE EASEMENT  
ALONG THE REAR PROPERTY LINE OF LOT 11, BLOCK 3, TRACT 2319, LAKE  
HAVASU CITY.

THE ABOVE DESCRIBED AREA CONTAINS APPROXIMATELY 1,554 S.F.

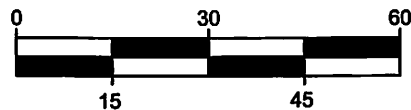


# EXHIBIT "B" EASEMENT ABANDONMENT ON

LOT 11, BLOCK 3 OF TRACT 2319, LAKE HAVASU CITY,  
BEING A SUBDIVISION OF A PORTION OF SECTION 14, TOWNSHIP 13 NORTH,  
RANGE 20 WEST, GILA & SALT RIVER MERIDIAN, MOHAVE COUNTY, ARIZONA.



ACCURATE PROFESSIONAL  
LAND SURVEYING, INC.  
P.O. BOX 3722  
LAKE HAVASU CITY, AZ 86405  
(928) 505-2570



SCALE: 1"=30'

JOB No.  
2019-0630A  
PAGE 2 OF 2