

EXHIBIT A

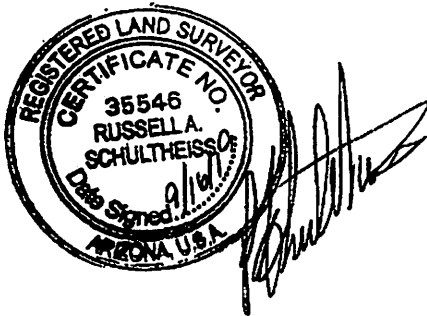
1

LEGAL DESCRIPTION:

ABANDONMENT: A PORTION OF A
20' X 50' PUBLIC UTILITY & DRAINAGE
EASEMENT LOTS 20 & 21, BLOCK 11, TRACT 2215

THAT PORTION OF THE 50 FOOT PUBLIC UTILITY & DRAINAGE EASEMENT,
LOTS 20 & 21, BLOCK 11, TRACT 2215, IN THE CITY OF LAKE HAVASU PER
THE OFFICIAL PLAT RECORDED AT RECEPTION NUMBER 64411 ON JULY 22,
1969, IN THE OFFICE OF THE COUNTY RECORDER, ALSO BEING A PORTION
OF SECTION 25, T.14N., R. 20W., G.&S.R.M., MOHAVE COUNTY, STATE OF
ARIZONA, DESCRIBED AS FOLLOWS:

THE NORTHERLY 33 FEET OF THAT CERTAIN PUBLIC UTILITY AND
DRAINAGE EASEMENT LYING 10 FOOT WESTERLY 10 FOOT EASTERLY OF
THE COMMON BOUNDARY OF SAID LOT 20 & 21.



Expires 12/31/21

9/16/19

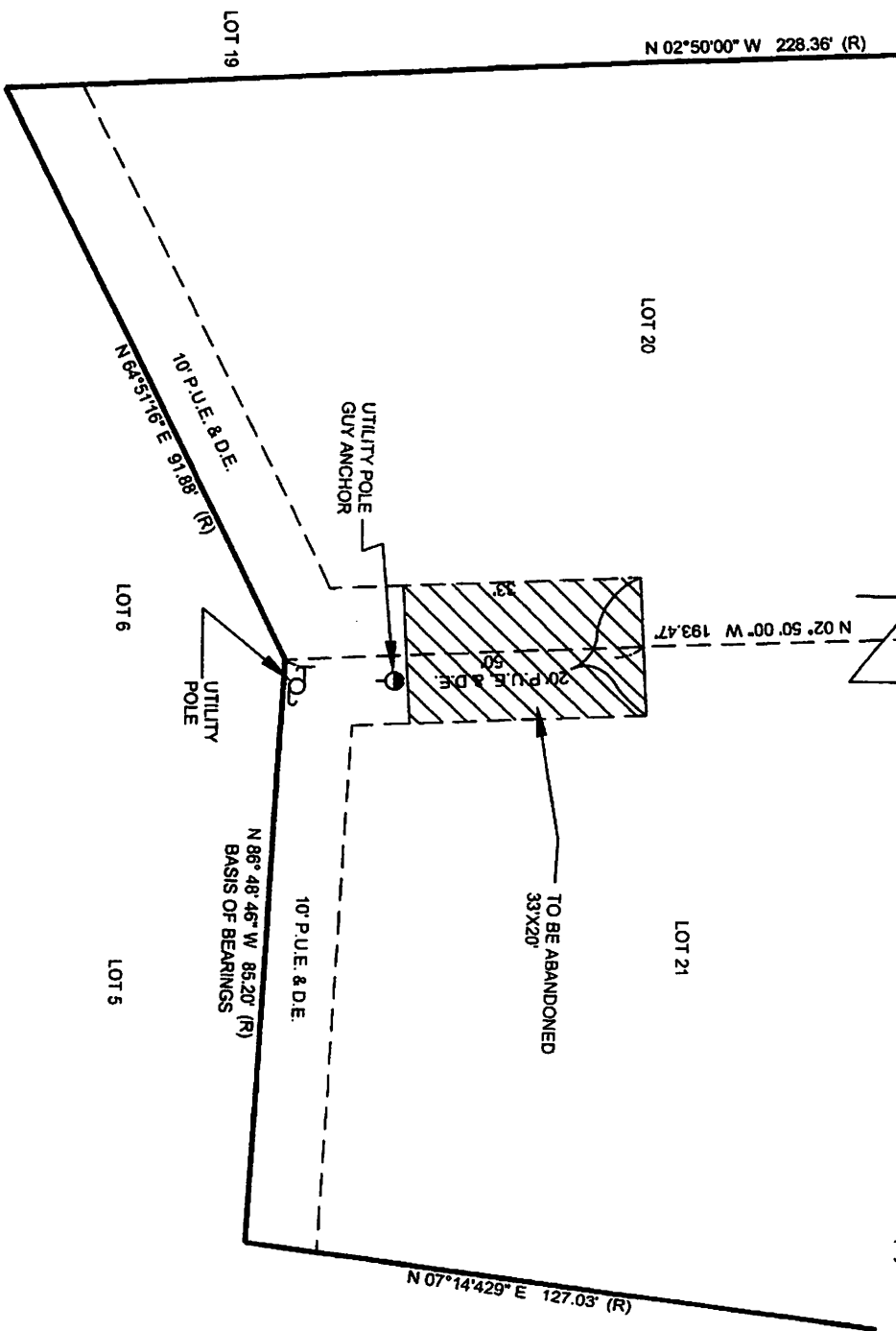
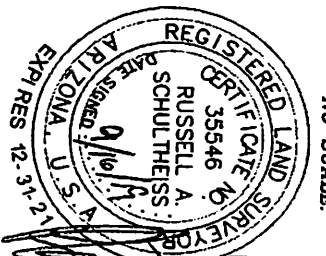
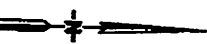
RAS

JN19-197

EXHIBIT "B" PARTIAL EASEMENT ABANDONMENT SKETCH TO ACCOMPANY LEGAL DESCRIPTIONS

CRATER DRIVE

LEGEND
P.U.E. INDICATES PUBLIC UTILITY EASEMENT
(R) INDICATES RECORD DATA PER TRACT 2258



ARQ
Land Surveying
30 S. Acorn Blvd. Ste. 107
Lake Havasu City, AZ 86403
(929) 860-0889 FAX (929) 860-7401
a division of ARQ Consulting LLC