

EXHIBIT "A"
EASEMENT ABANDONMENT
ON

LOTS 12, 13 & 14, BLOCK 10 OF TRACT 2271, LAKE HAVASU CITY,
BEING A SUBDIVISION OF A PORTION OF SECTION 18, TOWNSHIP 13 NORTH,
RANGE 19 WEST, GILA & SALT RIVER MERIDIAN, MOHAVE COUNTY, ARIZONA.

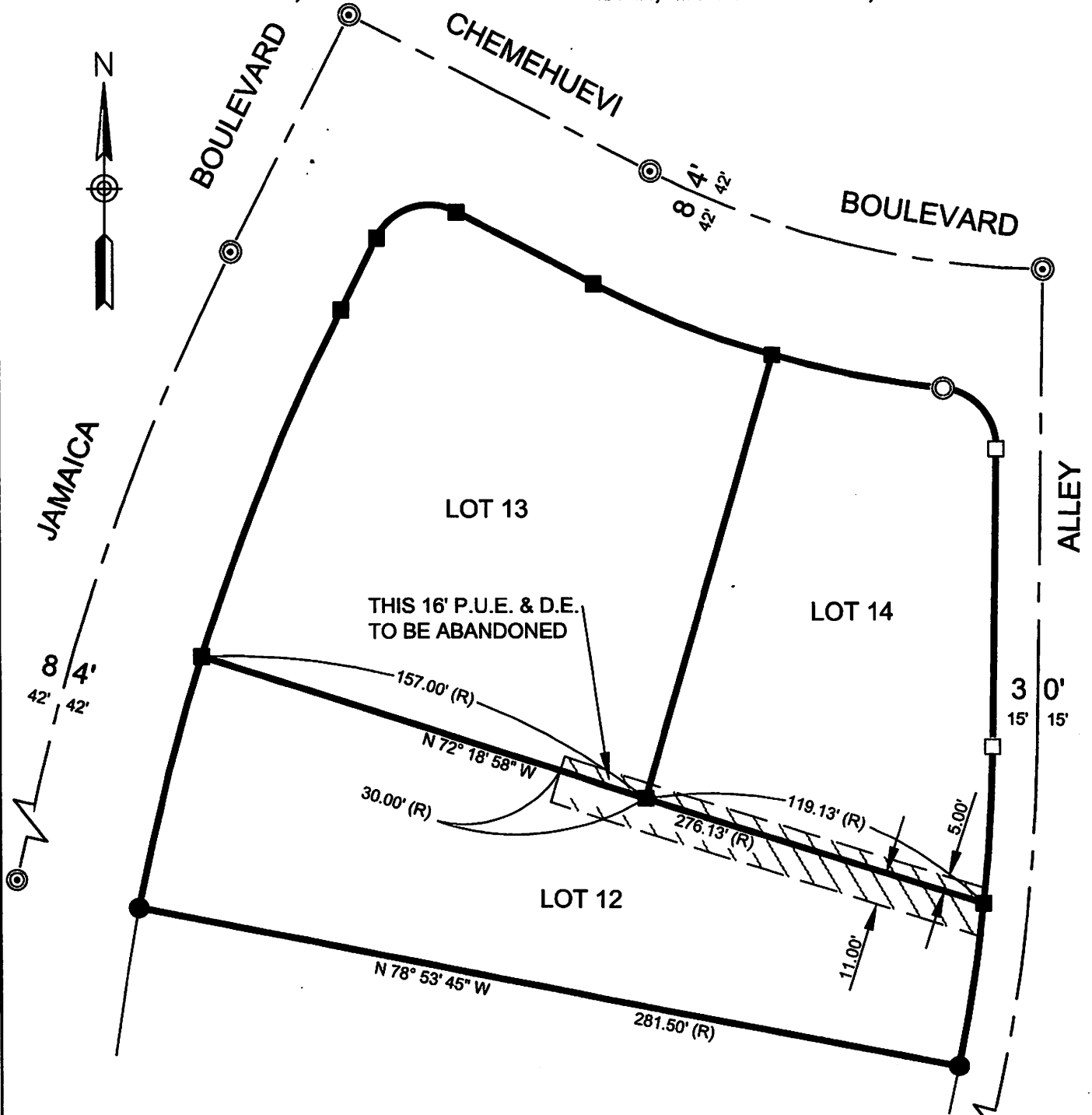
THE ENTIRE 16 PUBLIC UTILITY AND DRAINAGE EASEMENT THAT RUNS ALONG
THE COMMON PROPERTY LINES OF LOTS 12, 13 & 14, BLOCK 10 OF TRACT
2271, LAKE HAVASU CITY,
BEING A SUBDIVISION OF A PORTION OF SECTION 18, TOWNSHIP 13 NORTH,
RANGE 19 WEST, GILA & SALT RIVER MERIDIAN, MOHAVE COUNTY, ARIZONA.

THE ABOVE DESCRIBED AREA CONTAINS APPROXIMATELY 2,386 S.F.

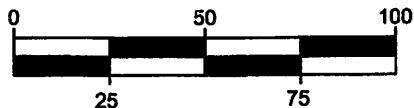


EXHIBIT "B"
EASEMENT ABANDONMENT
ON

LOTS 12, 13 & 14, BLOCK 10 OF TRACT 2271, LAKE HAVASU CITY,
BEING A SUBDIVISION OF A PORTION OF SECTION 18, TOWNSHIP 13 NORTH,
RANGE 19 WEST, GILA & SALT RIVER MERIDIAN, MOHAVE COUNTY, ARIZONA.



ACCURATE PROFESSIONAL
LAND SURVEYING, INC.
P.O. BOX 3722
LAKE HAVASU CITY, AZ 86405
(928) 505-2570



SCALE: 1"=50'

JOB No.
2019-0615
PAGE 2 OF 2