

EXHIBIT "A"
EASEMENT ABANDONMENT
ON

LOT 13, BLOCK 1 OF TRACT 2220, LAKE HAVASU CITY,
BEING A SUBDIVISION OF A PORTION OF SECTION 8, TOWNSHIP 13 NORTH,
RANGE 19 WEST, GILA & SALT RIVER MERIDIAN, MOHAVE COUNTY, ARIZONA

A PORTION OF LOT 13, BLOCK 1, TRACT 2220, LAKE HAVASU CITY, BEING
A SUBDIVISION OF A PORTION OF SECTION 8, TOWNSHIP 13 NORTH,
RANGE 19 WEST, GILA & SALT RIVER MERIDIAN, MOHAVE COUNTY, ARIZONA.
BEING MORE PARTICULARLY DESCRIBED AS FOLLOWS:

COMMENCING AT THE COMMON REAR PROPERTY CORNER OF SAID LOT 13 AND
LOTS 11, 14 & PARCEL "C", BLOCK 1, TRACT 2220, LAKE HAVASU CITY;
THENCE, N. 89°42'00" W., ALONG THE COMMON PROPERTY LINE OF SAID LOTS
13 & 14, A DISTANCE OF 30.00 FEET; SAID POINT BEING THE TRUE POINT OF
BEGINNING;

THENCE, CONTINUING ALONG SAID PROPERTY LINE N. 89°42'00" W., A
DISTANCE OF 20.00 FEET;
THENCE, S. 00°18'00" W., LEAVING SAID PROPERTY LINE A DISTANCE
OF 10.00 FEET;
THENCE, S. 89°42'00" E., ON A PARALLEL LINE TO THE COMMON SIDE
PROPERTY LINE OF SAID LOTS 13 & 14 A DISTANCE OF 20.00 FEET;
THENCE, N. 00°18'00" E., A DISTANCE OF 10.00 FEET TO THE TRUE
POINT OF BEGINNING.

THE ABOVE DESCRIBED AREA CONTAINS APPROXIMATELY 200 S.F.



EXHIBIT "B" EASEMENT ABANDONMENT ON

LOT 13, BLOCK 1 OF TRACT 2220, LAKE HAVASU CITY,
BEING A SUBDIVISION OF A PORTION OF SECTION 8, TOWNSHIP 13 NORTH,
RANGE 19 WEST, GILA & SALT RIVER MERIDIAN, MOHAVE COUNTY, ARIZONA

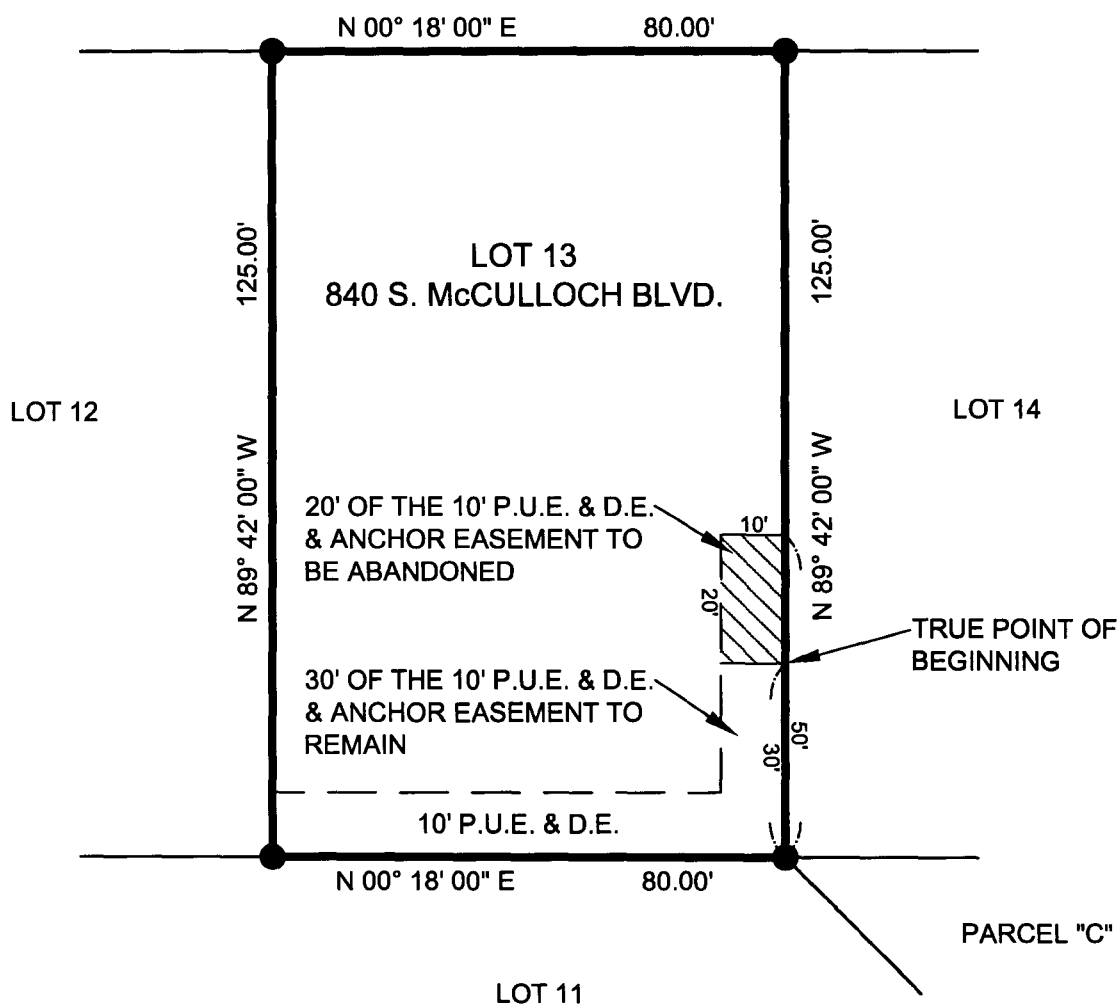
McCULLOCH

BOULEVARD

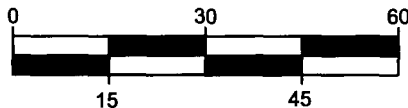
8' 4" 42'

N 00° 18' 00" E

463.95'



ACCURATE PROFESSIONAL
LAND SURVEYING, INC.
P.O. BOX 3722
LAKE HAVASU CITY, AZ 86405
(928) 505-2570



SCALE: 1"=30'

JOB No.
2017-0909
PAGE 2 OF 2