

**EXHIBIT "A"**  
**EASEMENT ABANDONMENT**  
**ON**

LOT 15, BLOCK 6 OF TRACT 2224, LAKE HAVASU CITY,  
BEING A SUBDIVISION OF A PORTION OF SECTION 27, TOWNSHIP 14 NORTH,  
RANGE 20 WEST, GILA & SALT RIVER MERIDIAN, MOHAVE COUNTY, ARIZONA

A PORTION OF LOT 15, BLOCK 6, TRACT 2224, LAKE HAVASU CITY, BEING  
A SUBDIVISION OF A PORTION OF SECTION 27, TOWNSHIP 14 NORTH,  
RANGE 20 WEST, GILA & SALT RIVER MERIDIAN, MOHAVE COUNTY, ARIZONA.  
BEING MORE PARTICULARLY DESCRIBED AS FOLLOWS:

COMMENCING AT THE COMMON REAR PROPERTY CORNER OF SAID LOT 15  
AND LOT 16, BLOCK 6, TRACT 2224, LAKE HAVASU CITY; THENCE,  
S. 65°44'00" E., ALONG THE COMMON SIDE PROPERTY LINE OF  
SAID LOTS 15 & 16, A DISTANCE OF 30.00 FEET; SAID POINT BEING THE  
TRUE POINT OF BEGINNING;

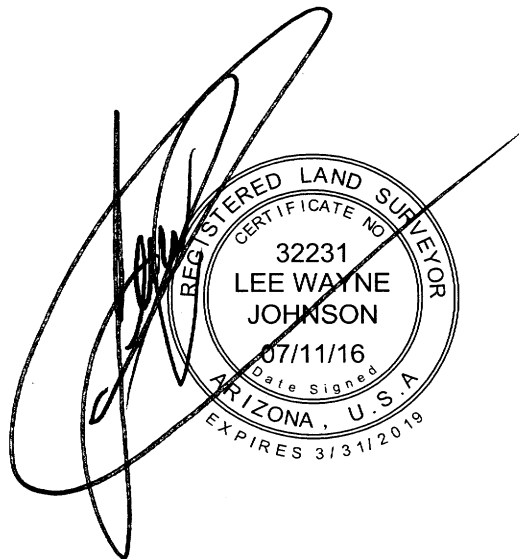
THENCE, CONTINUING ALONG SAID PROPERTY LINE S. 65°44'00" E., A  
DISTANCE OF 20.00 FEET;

THENCE, N. 24°16'00" E., LEAVING SAID PROPERTY LINE, A DISTANCE  
OF 10.00 FEET;

THENCE, N. 65°44'00" W., ON A PARALLEL LINE TO THE COMMON SIDE  
PROPERTY LINE OF SAID LOTS 15 & 16, A DISTANCE OF 20.00 FEET;

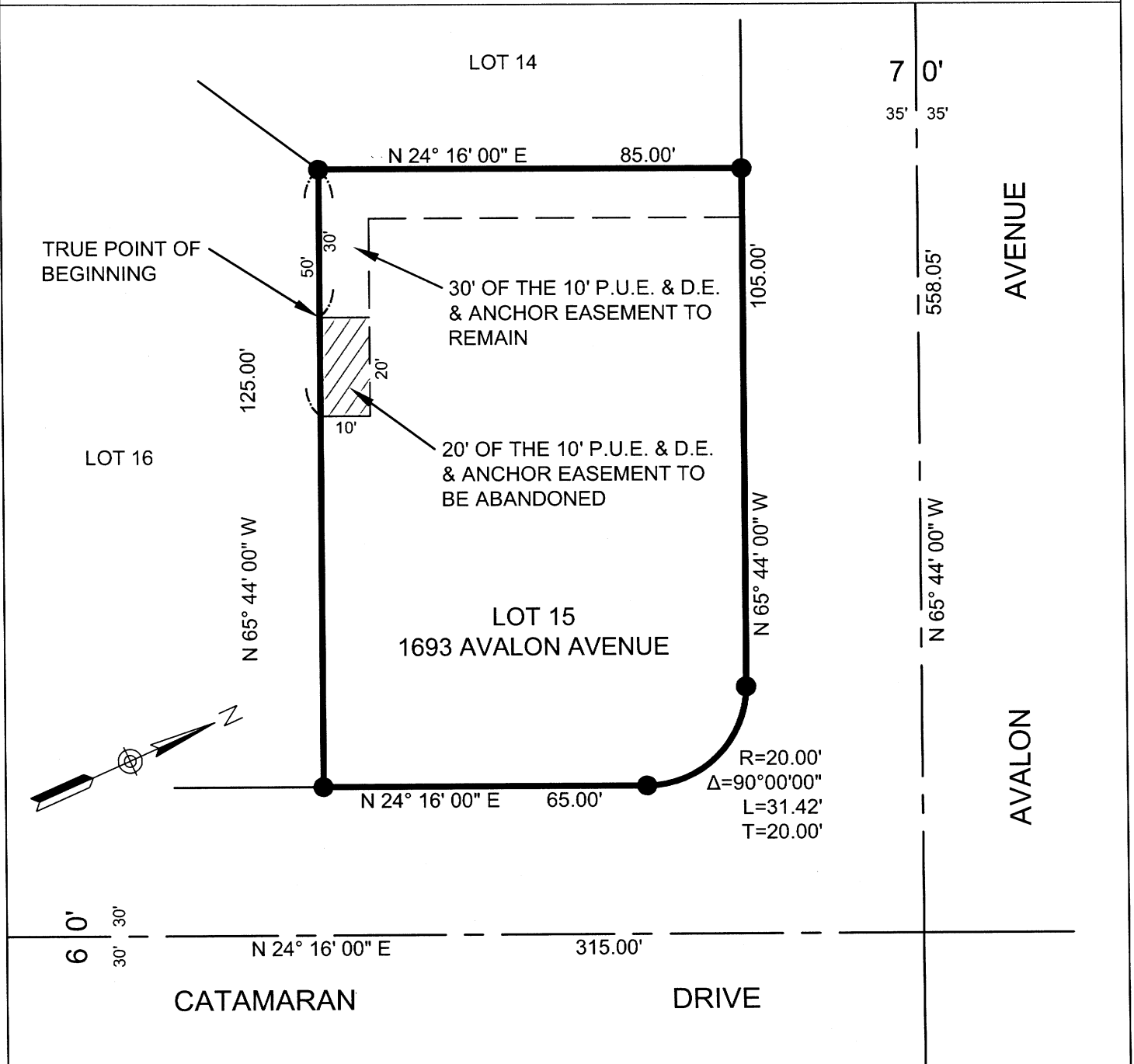
THENCE, S. 24°16'00" W., A DISTANCE OF 10.00 FEET TO THE TRUE  
POINT OF BEGINNING.

THE ABOVE DESCRIBED AREA CONTAINS APPROXIMATELY 200 S.F.

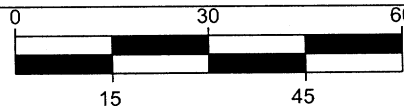


# EXHIBIT "B" EASEMENT ABANDONMENT ON

LOT 15, BLOCK 6 OF TRACT 2224, LAKE HAVASU CITY,  
BEING A SUBDIVISION OF A PORTION OF SECTION 27, TOWNSHIP 14 NORTH,  
RANGE 20 WEST, GILA & SALT RIVER MERIDIAN, MOHAVE COUNTY, ARIZONA



ACCURATE PROFESSIONAL  
LAND SURVEYING, INC.  
P.O. BOX 3722  
LAKE HAVASU CITY, AZ 86405  
(928) 505-2570



SCALE: 1"=30'

JOB No.  
2016-0442  
PAGE 2 OF 2