

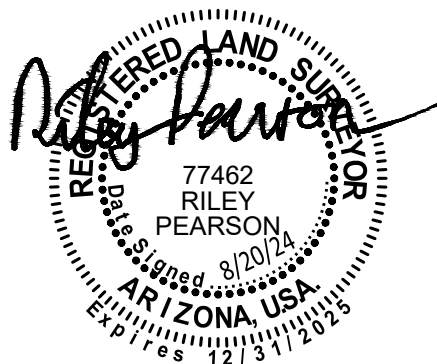
EXHIBIT A

EASEMENT ABANDONMENT ON LOT 24, BLOCK 3, TRACT 2277

IN THE NE1/4 SECTION 4, T13N, R20W, G&SRM, CITY OF LAKE HAVASU CITY, MOHAVE COUNTY, ARIZONA

A portion of Lot 24, Block 3, Tact 2277 Lake Havasu City more particularly described as follows:

The northerly 3.0 feet of the southerly 8.0 feet of Lot 24, except the west 10.0 feet thereof.



ABUNDANCE LAND SERVICES, LLC

PO Box 1867, Lake Havasu City, AZ 86405

riley@abundancelands.net

406-546-2264



C:\Users\ryanr\Dakota Land Consulting\Dakota Land Consulting -

General\ALS 00100\183 Phillippe\011689 Peach

Blossom\CAD\PUE ABDN -1689 Peach Blsm.dwg

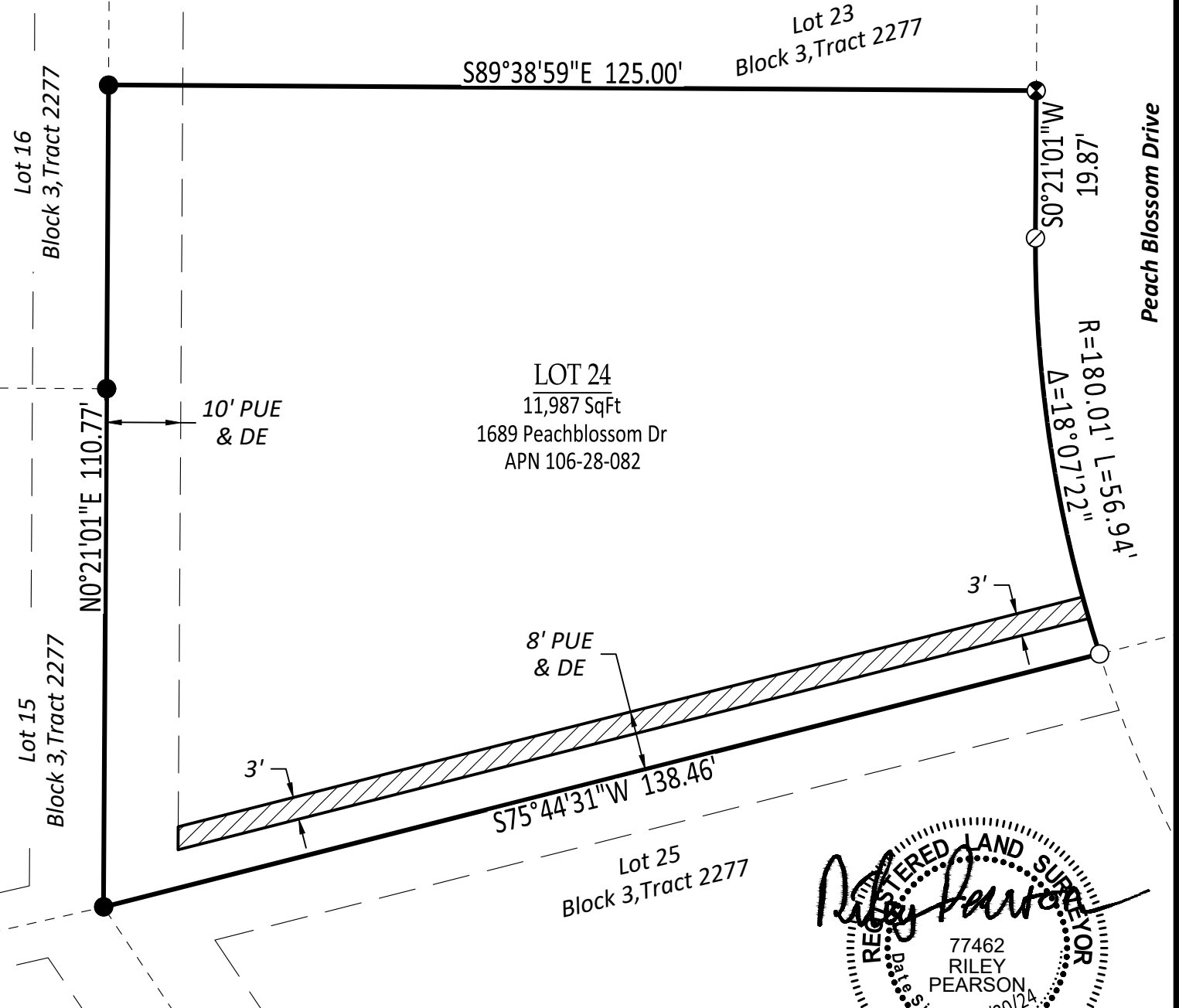
Plotted 8/20/24

Page 1 of 2

EXHIBIT B

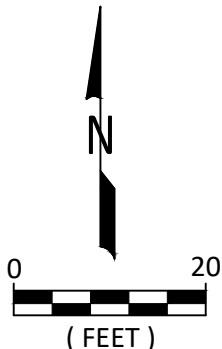
EASEMENT ABANDONMENT ON LOT 24, BLOCK 3, TRACT 2277

IN THE NE1/4 SECTION 4, T13N, R20W, G&SRM, CITY OF LAKE HAVASU CITY, MOHAVE COUNTY, ARIZONA



LEGEND

- CALCULATED CORNER
- ⊗ NAIL & WASHER "77462"
- PLASTIC CAP "77462"
- PLASTIC CAP ILLEGIBLE PLAT OF TRACT 2277, LAKE HAVASU CITY, REC. No. 72-5374, MCR
- PROPOSED EASEMENT ABANDONMENT AREA



ABUNDANCE LAND SERVICES, LLC
 PO Box 1867, Lake Havasu City, AZ 86405
 riley@abundancelands.net
 406-546-2264

C:\Users\ryanr\Dakota Land Consulting\Dakota Land Consulting -
 General\ALS 00100\183 Phillippe\011689 Peach Blossom\CAD\PUE ABDN -1689 Peach Blsm.dwg
 Plotted 8/20/24 Page 2 of 2