



**Castles Design Group**  
A Professional Architect  
Corporation

3801 E. 9th Ave., Suite 800  
Aurora, Texas 76008  
Tel: (714) 864-1974  
Fax: (714) 864-2766  
COPYRIGHT

This drawing is the property of the above referenced Professional and is not to be used for any purpose other than the specific project and site named herein, and cannot be reproduced in any manner without the express written permission from the Professional.

REVISION	DATE

PROFESSIONAL IN CHARGE  
JS  
PROJECT MANAGER  
RR  
QUALITY CONTROL  
JS  
DRAWN BY  
RR  
PROJECT NAME

**CIRCLE K STORES, INC.**

51 RIVIERA DRIVE  
LAKE HAVASU CITY, AZ 86403  
PROTCYCLE # RO 03/21/2025



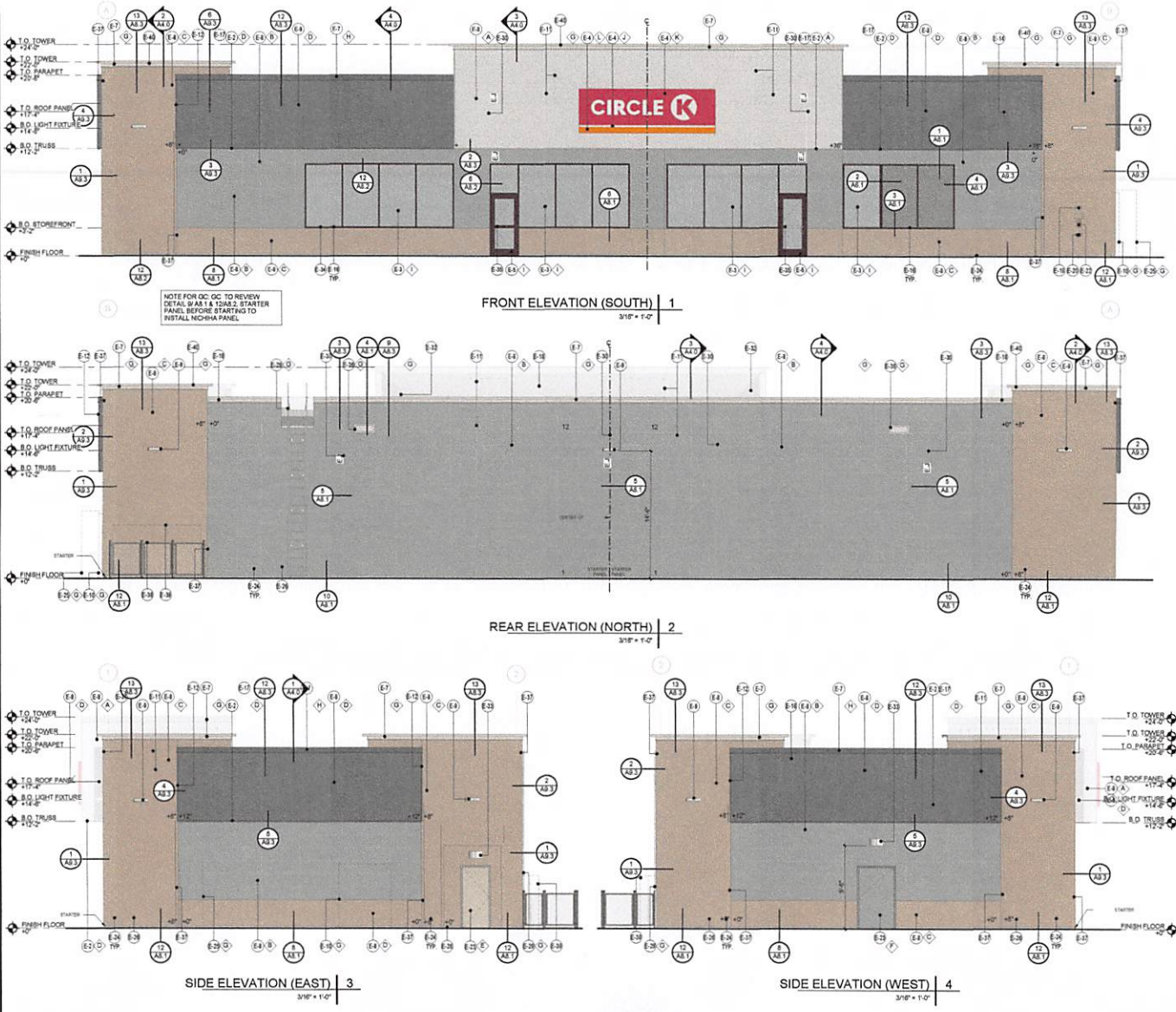
CIRCLE K STORES, INC.  
PROJECT NUMBER:  
202407-141  
EXTERIOR ELEVATIONS

A2.1

KEY	
NUMBER	DESCRIPTION
E-2	LINE OF CANOPY/ROOF
E-3	DARK BRONZE ANODIZED WINDOW FRAME WITH GRAY TINTED GLASS PER SOLARBAN SOLARBARY SPEC. SEE GLAZING SCHEDULE ON SHEET A8.5
E-4	INTERNALLY ELIMINATED WINDOW FRAME PERMITS G.C. TO PROVIDE COMPRESSION BELIEVES AND BLOCKING FOR THRU-BOLT CONNECTIONS. SEE SIP PLANS AND COORDINATE WITH SIGNAGE VENDOR AS REQ.
E-5	DARK BRONZE ANODIZED DOOR WITH CLEAR GLASS 8" OVERFRONT SYSTEM
E-7	PRE-FINISHED METAL FASCIA
E-8	NICHHA FIBER CEMENT WALL PANEL SYSTEM
E-9	WALL MOUNTED LIGHT FIXTURE. COLOR: WHITE. SEE ELECTRICAL PLANS
E-10	SERVICE DISCONNECT LOCATION. SEE ELECTRICAL PLAN
E-11	ROOF LINE AND HVAC UNITS
E-12	1" TYP. NICHHA CORNER KEY EDGE. TYP. TO ALL CORNERS
E-14	ADDRESSING LOCATION 8" TALL INCH WHITE NUMBERS FINAL AREA LOCATION TO BE DETERMINED BY FIRE DEPARTMENT
E-16	HEMMED EDGE FLASHING. INSTALL PER MFR. SPEC. COLOR TO MATCH #89 "MORNING FOG"
E-17	NICHHA OVERHAND FLASHING. SEE DETAIL 3A4.3. COLOR TO MATCH #89 "MORNING FOG"
E-18	PARAMET WALL BEYOND
E-19	(KNOX KEY) 8" X 4" AT 8'-0" AFF (IF REQUIRED BY FIRE DEPARTMENT)
E-20	FIRE DEPARTMENT CONNECTION (IF REQUIRED)
E-22	EMERGENCY FUEL SHUT-OFF SWITCH. LOCATE PER FUEL SHEETS
E-23	INSULATED METAL DOOR
E-24	NICHHA EXTERIOR "B" METAL FLASHING 3" FROM THE HARD SURFACE
E-25	CO2 TANK WITH METAL COVERED CONTAINER
E-26	EYE BROW FINISH TO EXTEND ABOVE SIGNAGE/LOGO. SEE DET. 3A4.1
E-28	METAL ROOF ACCESS LADDER. #89 "MORNING FOG". SEE DETAIL 3A4.3
E-30	CONTROL EXPANSION JOINT "J" LOCATION. SEE DETAIL 3A4.1
E-32	PARAMET BRACING. SEE SIP VENDOR SHEETS
E-33	WALL MOUNTED EMERGENCY LIGHT FIXTURE. COLOR: WHITE. SEE ELECTRICAL
E-34	DARK BRONZE ANODIZED WINDOW FRAME WITH SPANREL GLASS
E-35	DOOR DETAIL, PROVIDED AND INSTALL BY GRANITE VENDOR
E-37	SCUPPER AND OVER FLOW DRAIN. SEE AT 1' DETAIL 4A.1 & 5A.1 FOR E-37
E-38	NICHHA FIBER CEMENT PANEL CORNER SYSTEM
E-39	4" CHAIN LINK FENCE. INSTALL PER MANUFACTURER REQUIREMENTS. SEE SHEET B0.4
E-39	EXTERIOR SWITCHGEARS. SEE ELECTRICAL DRAWINGS
E-40	LIGHT BAR FOR LED LINEAR LIGHTING. SEE DETAIL 3A4.3

FINISH	
(A)	"NICHHA TUFF BLOCK COLOR TO MATCH #89 "MORNING FOG"
(B)	"NICHHA TUFF BLOCK COLOR TO MATCH #89 "MORNING FOG"
(C)	"NICHHA CANYONBRICK "SHALE BROWN"
(D)	"NICHHA RIBBED COLOR TO MATCH #89 "MORNING FOG"
(E)	"SHERWIN WILLIAMS #89 "MORNING FOG"
(F)	"SHERWIN WILLIAMS #89 "MORNING FOG"
(G)	"SHERWIN WILLIAMS #89 "MORNING FOG"
(H)	"SHERWIN WILLIAMS #89 "MORNING FOG"
(I)	ELEVATE CHARCOAL GRAY BR (USE FOR PRE-FINISHED METAL FASCIA/COPING)
(J)	1" INSULATED, DOUBLE PANED GRAY TINTED GLASS
(K)	"SHERWIN WILLIAMS #89 "MORNING FOG"
(L)	"SHERWIN WILLIAMS #89 "MORNING FOG"
(M)	"SHERWIN WILLIAMS #89 "MORNING FOG"
(N)	"SAFETY RED"
(O)	CIRCLE K ORANGE #89 144
(P)	"SHERWIN WILLIAMS MANUFACTURER ONLY COLOR TO BE PRE-ORDERED TO ENSURE AVAILABILITY AT TIME OF CONSTRUCTION TO BE PURCHASED BY CIRCLE K INSTALLED BY G.C. G.C. TO COORDINATE WITH G.C. AND OWNER'S REP

FASTENING SCHEDULE FOR NICHHA PANEL	
5	FASTENERS PER ULTIMATE CLIP @ 8" O.C.
#8	OR #10 FULLY THREADED WOOD SCREW, 1" LONG
	FASTEN STARTER TRACK @ 12" O.C.
#8	OR #10 FULLY THREADED WOOD SCREW, 1" LONG
	FACE FASTENERS TO CDX PLYWOOD @ 8" O.C.
#8	OR #10 FULLY THREADED WOOD SCREW, 1-1/2" LONG
	FACE FASTENERS BACK TO STUDS @ 16" O.C.
#8	OR #10 FULLY THREADED WOOD SCREW, 3-1/2" LONG



MATERIAL LEGEND	
	1 NICHHA CANYONBRICK
	2 NICHHA TUFFBLOCK
	3 METAL COPING, CORNICE AND OUTLET
	4 1" INSULATED CLEAR GLASS
	5 ANODIZED WINDOW AND DOOR FINISHING
	6 NICHHA RIBBED
	7 SPANREL GLASS
	8 NICHHA TUFFBLOCK
	9 METAL COPING, CORNICE AND OUTLET