



Government Fleet Account Manager

Chad Welsh

(623) 261-0570

chadwelsh@santanford.com

Department Fax

(480) 621-3796

Date: November 5, 2025

Customer: Lake Havasu City

Line Item/State Contract #: W8B/CTR059323

Vehicle Description: 2025 Maverick XL AWD (phase II purchase Stock#252858)

2.0L Ecoboost Engine

MSRP \$30,125.00

Base Bid Price **\$29,221.25** 3% off MSRP

Upgrade Options

1	4 Keys with 2 FOBS	400.00
2	Window Tint	200.00
3		
4		
5		
6		
7		
8		
9		
10		
11		
12		
13		
14		
15		
16		
17		
18		
19		
20		

\$600.00

Bid Price (with options) **\$29,821.25**

Tire Tax	11.65
Sales Tax (8.30%)	2,475.16

Ford Extended Service Plan

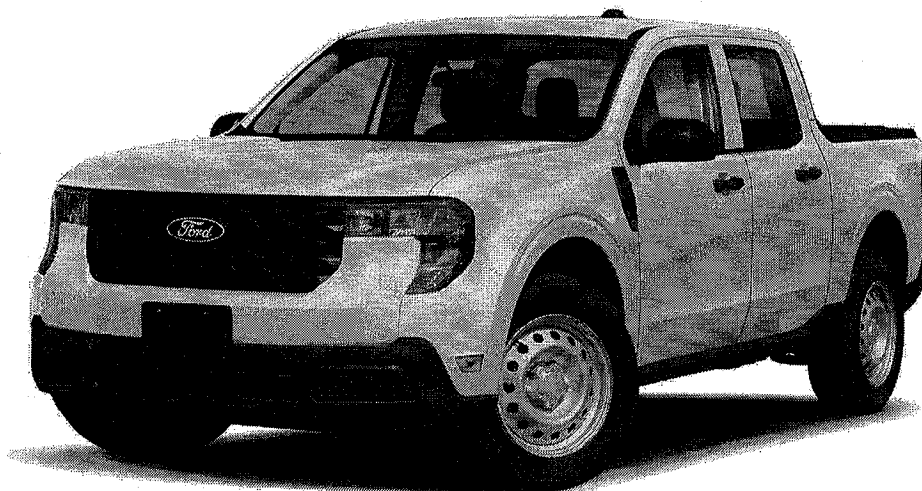
Transportation Fee **\$400.00**

Total Delivered Price **\$32,708.06**

Notes:

Thank You,
Joe

2025 Maverick AWD SuperCrew 4.5' box 121.1" WB XL (W8B)
Price Level: 560



Client Proposal

Prepared by:

Chad Welsh

Date: 11/05/2025



San Tan Ford | 1429 East Motorplex Loop, Gilbert, Arizona, 852970410



Prepared by: Chad Welsh
11/05/2025

San Tan Ford | 1429 East Motorplex Loop Gilbert Arizona | 852970410

2025 Maverick AWD SuperCrew 4.5' box 121.1" WB XL (W8B)

Price Level: 560

Table of Contents

Description	Page
Cover Page.....	1
Table of Contents.....	2
As Configured Vehicle.....	3
Selected Equip & Specs.....	5
Warranty.....	19



Prepared by: Chad Welsh

11/05/2025

San Tan Ford | 1429 East Motorplex Loop Gilbert Arizona | 852970410

2025 Maverick AWD SuperCrew 4.5' box 121.1" WB XL (W8B)

Price Level: 560

As Configured Vehicle

Code	Description
Base Vehicle	
W8B	Base Vehicle Price (W8B)
Packages	
102A	Equipment Group 102A <i>Includes:</i> <ul style="list-style-type: none">- Engine: 2.0L EcoBoost- 3.63 Axle Ratio- Transmission: 8-Speed Automatic- GVWR: 5,320 lbs- Tires: P225/65R17 A/S BSW- Front Cloth Bucket Seats <i>Includes 6-way manual adjustable driver and 4-way manual adjustable passenger, front floor console with eShifter, armrest and storage bin.</i> <ul style="list-style-type: none">- Radio: AM/FM Stereo w/6 Speakers- Includes 2 front USB ports and 1 rear USB port.- SYNC 4 w/Enhanced Voice Recognition <i>Includes 13.2" LCD touch screen with swipe capability, wireless phone connection, cloud connected, AppLink with App catalog, 911 Assist, Apple CarPlay and Android Auto compatibility, digital owner's manual and conversational voice command recognition.</i> <ul style="list-style-type: none">- SiriusXM w/360L
Powertrain	
99A	Engine: 2.0L EcoBoost <i>Includes:</i> <ul style="list-style-type: none">- 3.63 Axle Ratio
448	Transmission: 8-Speed Automatic
NONAX	3.63 Axle Ratio
STDGV	GVWR: 5,320 lbs
Wheels & Tires	
STDTR	Tires: P225/65R17 A/S BSW
64Z	Wheels: 17" Steel w/Sparkle Silver Painted Cover
Seats & Seat Trim	
9	Front Cloth Bucket Seats <i>Includes 6-way manual adjustable driver and 4-way manual adjustable passenger, front floor console with eShifter, armrest and storage bin.</i>
Other Options	

Prices and content availability as shown are subject to change and should be treated as estimates only. Actual base vehicle, package and option pricing may vary from this estimate because of special local pricing, availability or pricing adjustments not reflected in the dealer's computer system. See salesperson for the most current information.



Prepared by: Chad Welsh

11/05/2025

San Tan Ford | 1429 East Motorplex Loop Gilbert Arizona | 852970410

2025 Maverick AWD SuperCrew 4.5' box 121.1" WB XL (W8B)

Price Level: 560

As Configured Vehicle (cont'd)

Code	Description
121WB	121" Wheelbase
PAINT	Monotone Paint Application
STDRD	Radio: AM/FM Stereo w/6 Speakers <i>Includes 2 front USB ports and 1 rear USB port.</i> <i>Includes:</i> - SYNC 4 w/Enhanced Voice Recognition <i>Includes 13.2" LCD touch screen with swipe capability, wireless phone connection, cloud connected, AppLink with App catalog, 911 Assist, Apple CarPlay and Android Auto compatibility, digital owner's manual and conversational voice command recognition.</i> - SiriusXM w/360L
60B	2K Trailer Hitch Receiver w/4-Pin Connector
Dealer Installed Options	
AHQAB	First Aid Kit <i>Shipped separately from the vehicle for dealer installation.</i>
Exterior Color	
YZ_01	Oxford White
Interior Color	
9W_03	Black Onyx/Dark Slate w/Front Cloth Bucket Seats

Prices and content availability as shown are subject to change and should be treated as estimates only. Actual base vehicle, package and option pricing may vary from this estimate because of special local pricing, availability or pricing adjustments not reflected in the dealer's computer system. See salesperson for the most current information.



Prepared by: Chad Welsh

11/05/2025

San Tan Ford | 1429 East Motorplex Loop Gilbert Arizona | 852970410

2025 Maverick AWD SuperCrew 4.5' box 121.1" WB XL (W8B)

Price Level: 560

Selected Equip & Specs

Dimensions

- Conventional Capacity: 2,000 lbs.
- Cargo box length: 54.4"
- Cargo box volume: 33.3 cu.ft.
- Cargo box max width: 53.3"
- Cargo box tailgate width: 49.8"
- Vehicle body length: 199.7"
- Vehicle body height: 68.7"
- Vehicle turning radius: 20.0'
- Rear track: 62.8"
- Total passenger volume: 98.3 cu.ft.
- Headroom second-row: 39.6"
- Leg room second-row: 36.9"
- Shoulder room second-row: 55.6"
- Hip room second-row: 54.1"
- GCWR: 6,145 lbs.
- Cargo box min width: 42.6"
- Pickup box depth: 20.3"
- Cargo box max length: 72.0"
- Cargo box length feet: 4.5
- Vehicle body width: 72.6"
- Wheelbase: 121.1"
- Front track: 63.4"
- Front bumper to back of cab: 137.6"
- Headroom first-row: 40.3"
- Leg room first-row: 42.8"
- Shoulder room first-row: 57.3"
- Hip room first-row: 55.4"

Powertrain

- Spark ignition system
- Engine cylinders: I-4
- * **Torque: 280 lb.-ft. @3000 RPM**
- Hybrid electric motor starter
- Driver selectable drivetrain mode
- Automatic full-time AWD
- * **Recommended fuel: premium unleaded**
- All-speed ABS and driveline traction control
- * **2L I-4 gasoline direct injection, DOHC, variable valve control, intercooled turbo, engine with 250HP**
- * **Horsepower: 250 HP@5500 RPM**
- Radiator
- Auto stop-start engine
- * **8-speed automatic**
- All-wheel drive
- Easy Fuel capless fuel filler
- Permanent locking hub control

Fuel Economy and Emissions

- * **Fuel economy (city/highway/combined): 22 mpg/30 mpg/25 mpg**
- * **Fuel economy combined: 25 mpg**
- Gasoline secondary fuel type
- Electric additional fuel types
- * **Fuel economy city: 22 mpg**
- * **Fuel economy highway: 30 mpg**
- * **LEV3-ULEV50 emissions**

Suspension and Handling

- Standard ride suspension
- Gas-pressurized rear shock absorbers
- Gas-pressurized front shock absorbers

Driveability

Prices and content availability as shown are subject to change and should be treated as estimates only. Actual base vehicle, package and option pricing may vary from this estimate because of special local pricing, availability or pricing adjustments not reflected in the dealer's computer system. See salesperson for the most current information.



Prepared by: Chad Welsh

11/05/2025

San Tan Ford | 1429 East Motorplex Loop Gilbert Arizona | 852970410

2025 Maverick AWD SuperCrew 4.5' box 121.1" WB XL (W8B)

Price Level: 560

Selected Equip & Specs (cont'd)

- 4-wheel disc brakes
- 4-wheel antilock (ABS) brakes
- Electronic parking brake
- Automatic brake hold
- Hill Start Assist
- Strut front suspension
- Front coil springs
- Rear anti-roll bar
- Speed sensitive power steering
- Rack-pinion steering
- 2-wheel steering system
- Front and rear ventilated disc brakes
- Four channel ABS brakes
- Post Collision Braking automatic post-collision braking system
- Brake assist system
- Independent front suspension
- Front anti-roll bar
- Independent rear suspension
- Short and long arm rear suspension
- Electric power-assist steering system
- Driver selectable steering effort

Body Exterior

- * **Trailer wiring harness**
- Standard style pickup box
- Monotone paint
- Black door handles
- Body-coloured front bumper
- Rear bumper step
- Black grille
- Black door mirrors
- Conventional right rear passenger door
- P225/65RH17 AS BSW front and rear tires
- 4 doors
- Pickup bed-rail protectors
- Black side window trim
- Black rear window trim
- Black rear bumper
- Black front bumper rub strip
- Standard style side mirrors
- Conventional left rear passenger door
- Tailgate
- 17 x 7-inch front and rear silver steel wheels

Convenience

- Built-in virtual assistant
- Keyfob activated door locks
- Auto-locking doors
- Cruise control with steering wheel mounted controls
- Power first-row windows
- Driver foot rest
- Front beverage holders
- 12 beverage holders
- Driver and passenger door bins
- Rear under seat tray
- Dashboard storage
- Trip computer
- Power door locks with 2 stage unlocking
- All-in-one remote fob and ignition key
- Manual tailgate/rear door lock
- Day/Night rearview mirror
- Full floor console
- Fixed rear windshield
- Standard glove box
- 1 seatback storage pocket
- Rear door bins
- Rear beverage holders
- Retained accessory power
- PRND in IP

Comfort

- Automatic climate control
- Cabin air filter

Prices and content availability as shown are subject to change and should be treated as estimates only. Actual base vehicle, package and option pricing may vary from this estimate because of special local pricing, availability or pricing adjustments not reflected in the dealer's computer system. See salesperson for the most current information.



Prepared by: Chad Welsh

11/05/2025

San Tan Ford | 1429 East Motorplex Loop Gilbert Arizona | 852970410

2025 Maverick AWD SuperCrew 4.5' box 121.1" WB XL (W8B)

Price Level: 560

Selected Equip & Specs (cont'd)

- Rear under seat climate control ducts
- Cloth headliner material
- Full carpet floor covering
- Full floor coverage
- Carpet rear seatback upholstery
- Manual tilting steering wheel
- Voice-activated climate control
- Full headliner coverage
- Carpet front floor mats
- Cloth rear seat upholstery
- Urethane steering wheel
- Manual telescopic steering wheel

Seats and Trim

- Seating capacity: 5
- Driver seat with 6-way directional controls
- Height adjustable front seat head restraints
- Front seat center armrest
- Manual height adjustable driver seat
- Manual reclining passenger seat
- Fixed rear seats
- Rear bench seat
- Bucket front seats
- Front passenger seat with 4-way directional controls
- Manual front seat head restraint control
- Manual reclining driver seat
- Manual driver seat fore/aft control
- Manual passenger seat fore/aft control
- Fixed rear head restraints
- Cloth front seat upholstery

Entertainment Features

- 2 total number of 1st row displays
- Primary touchscreen display
- AM/FM/satellite
- AM radio
- SiriusXM with 360L satellite radio
- Radio data system (RDS)
- 3 month satellite trial subscription
- Speakers number: 6
- SYNC 4 with Enhanced Voice Recognition voice activated audio controls
- Wireless audio streaming
- 13.2 inch primary display
- SiriusXM with 360L AM/FM/Satellite radio
- In-vehicle audio
- FM radio
- Seek scan
- External memory control
- Standard grade speakers
- Steering wheel mounted audio controls
- Speed sensitive volume
- Integrated roof audio antenna

Lighting, Visibility and Instrumentation

- Coloured instrument panel insert
- Configurable instrumentation gauges
- Digital clock
- Exterior temperature display
- SmartGauge with EcoGuide ECO feedback display gauge
- * **Tachometer**
- Gauge cluster display size (inches): 8.00
- Reflector headlights
- Autolamp auto on/off headlight control
- Digital/analog instrumentation display
- Trip odometer
- Compass
- Redundant digital speedometer
- Driver information center
- Engine/electric motor temperature gauge
- Deep tinted windows
- LED low and high beam headlights
- Multiple enclosed headlights

Prices and content availability as shown are subject to change and should be treated as estimates only. Actual base vehicle, package and option pricing may vary from this estimate because of special local pricing, availability or pricing adjustments not reflected in the dealer's computer system. See salesperson for the most current information.



Prepared by: Chad Welsh

11/05/2025

San Tan Ford | 1429 East Motorplex Loop Gilbert Arizona | 852970410

2025 Maverick AWD SuperCrew 4.5' box 121.1" WB XL (W8B)

Price Level: 560

Selected Equip & Specs (cont'd)

- Delay-off headlights
- DRL preference setting
- Illuminated entry
- Variable instrument panel light
- High mounted center stop light
- Pickup box cargo light
- Auto High Beam auto high-beam headlights
- Fixed interval front windshield wipers
- Front reading lights
- LED daytime running lights
- Fade interior courtesy lights

Technology and Telematics

- SYNC 4 911 Assist emergency SOS system via mobile device
- Apple CarPlay/Android Auto smart device mirroring
- FordPass Connect 5G mobile hotspot internet access
- Bluetooth handsfree wireless device connectivity
- FordPass App mobile app access
- 3 USB ports

Safety and Security

- Driver front impact airbag
- Safety Canopy System curtain first and second-row overhead airbags
- Seat mounted side impact front passenger airbag
- Driver side knee airbag
- Rear seat center 3-point seatbelt
- Front and rear seatbelt pretensioners
- SecuriLock immobilizer
- Lane-Keeping Aid
- Pre-Collision Assist with Pedestrian Detection
- AdvanceTrac w/Roll Stability Control electronic stability control system with anti-rollover
- * First aid kit
- Seat mounted side impact driver airbag
- Passenger front impact airbag
- Airbag occupancy sensor
- 7 airbags
- Front height adjustable seatbelts
- 4 seatbelt pre-tensioners
- Remote panic alarm
- Pre-Collision Assist with Automatic Emergency Braking (AEB) forward collision mitigation
- Rear mounted camera
- Manual rear child safety door locks

Dimensions

General Weights

Curb weight	3,856 lbs.	* GVWR	5,240 lbs.
* Payload	1,500 lbs.		

Trailer Weights

Conventional capacity	2,000 lbs.	GCWR	6,145 lbs.
-----------------------------	------------	------------	------------

Off Road

Min ground clearance	8.6"	Loading floor height	30.1 "
Approach angle	21.6	Departure angle	21.2

Exterior Measurements

Prices and content availability as shown are subject to change and should be treated as estimates only. Actual base vehicle, package and option pricing may vary from this estimate because of special local pricing, availability or pricing adjustments not reflected in the dealer's computer system. See salesperson for the most current information.



Prepared by: Chad Welsh

11/05/2025

San Tan Ford | 1429 East Motorplex Loop Gilbert Arizona | 852970410

2025 Maverick AWD SuperCrew 4.5' box 121.1" WB XL (W8B)

Price Level: 560

Selected Equip & Specs (cont'd)

Vehicle body length	199.7"	Vehicle body width	72.6"
Vehicle body height	68.7"	Wheelbase	121.1"
Cargo box length	54.4"	Cargo box min width	42.6"
Cargo box volume	33.3 cu.ft.	Pickup box depth	20.3"
Cargo box max width	53.3"	Cargo box max length	72.0"
Cargo box tailgate width	49.8"	Cargo box length feet	4.5
Front track	63.4"	Rear track	62.8"
Vehicle turning radius	20.0'	Front bumper to back of cab	137.6"

Interior Volume

Total passenger volume 98.3 cu.ft.

Headroom

Headroom first-row	40.3"	Headroom second-row	39.6"
--------------------------	-------	---------------------------	-------

Legroom

Leg room first-row	42.8"	Leg room second-row	36.9"
--------------------------	-------	---------------------------	-------

Shoulder Room

Shoulder room first-row	57.3"	Shoulder room second-row	55.6"
-------------------------------	-------	--------------------------------	-------

Hip Room

Hip room first-row	55.4"	Hip room second-row	54.1"
--------------------------	-------	---------------------------	-------

Powertrain

Engine

* Engine 2L I-4 gasoline direct injection, DOHC, variable valve control, intercooled turbo, engine with 250HP	Valves per cylinder	4
Engine cylinders	Engine location	Front mounted engine
Ignition	Engine mounting direction	Transverse mounted engine
Engine block material	Cylinder head material	Aluminum cylinder head
Aluminum engine block		

Engine Specs

* Displacement	2.0L	* cc	122 cu.in.
* Bore	3.44"	* Stroke	3.27"
* Compression ratio	9.3		

Engine Power

* Horsepower	250 HP@5500 RPM	* Torque	280 lb.-ft. @3000 RPM
--------------------	-----------------	----------------	-----------------------

Alternator

Alternator amps	150A	Alternator type	Regenerative alternator
-----------------------	------	-----------------------	-------------------------

Prices and content availability as shown are subject to change and should be treated as estimates only. Actual base vehicle, package and option pricing may vary from this estimate because of special local pricing, availability or pricing adjustments not reflected in the dealer's computer system. See salesperson for the most current information.



Prepared by: Chad Welsh

11/05/2025

San Tan Ford | 1429 East Motorplex Loop Gilbert Arizona | 852970410

2025 Maverick AWD SuperCrew 4.5' box 121.1" WB XL (W8B)

Price Level: 560

Selected Equip & Specs (cont'd)

Battery

Battery amps 45Ah
Battery rating 390CCA

Battery type Lead acid battery
Battery run down protection Battery run down protection

Engine Extras

Radiator Radiator
Start-stop engine Auto stop-start engine

Starter Hybrid electric motor starter
Drivetrain selectable Driver selectable drivetrain mode

Transmission

* **Transmission** **8-speed automatic**

Transmission electronic control Transmission electronic control

Overdrive transmission Overdrive transmission

Lock-up transmission Lock-up transmission

* **First gear ratio** **4.69**

* **Second gear ratio** **3.31**

* **Third gear ratio** **3.01**

* **Fourth gear ratio** **1.92**

* **Fifth gear ratio** **1.45**

* **Sixth gear ratio** **1**

* **Reverse gear ratio** **2.96**

* **Seventh gear ratio** **0.75**

* **Eighth gear ratio** **0.62**

Selectable mode transmission Selectable mode transmission

Drive Type

4WD type Automatic full-time AWD

Drive type All-wheel drive

Drivetrain

* **Axle ratio** **3.63**

Exhaust

Tailpipe Stainless steel single exhaust

Fuel

* **Fuel type** **premium unleaded**

Fuel Tank

Capless fuel filler Easy Fuel capless fuel filler

* **Fuel tank capacity** **16.51 gal.**

Drive Feature

Traction control All-speed ABS and driveline traction control

Locking hub control Permanent locking hub control

Fuel Economy and Emissions

Fuel Economy

Secondary fuel type Gasoline secondary fuel type

* **Fuel economy combined** **25 mpg**

* **Fuel economy city** **22 mpg**

* **Fuel economy highway** **30 mpg**

Prices and content availability as shown are subject to change and should be treated as estimates only. Actual base vehicle, package and option pricing may vary from this estimate because of special local pricing, availability or pricing adjustments not reflected in the dealer's computer system. See salesperson for the most current information.



Prepared by: Chad Welsh

11/05/2025

San Tan Ford | 1429 East Motorplex Loop Gilbert Arizona | 852970410

2025 Maverick AWD SuperCrew 4.5' box 121.1" WB XL (W8B)

Price Level: 560

Selected Equip & Specs (cont'd)

* **Fuel economy (city/highway/combined) 22 mpg/30 mpg/25 mpg**

Fuel economy status Current fuel economy status

Emissions

* **Emissions** **LEV3-ULEV50 emissions**

* **Emissions tiers** **Tier 3 Bin 50 emissions**

Fuel Economy (Alternate 1)

Additional fuel types Electric additional fuel types

Green Values

* **Greenhouse gas score** **5.00 GG**

* **Energy Impact Score (Barrels per year)** **11.9**

* **Carbon FP / Tailpipe and upstream total GHG (CO₂, tons per year)** **7.1**

Suspension and Handling

Suspension

Suspension Standard ride suspension

Front shock absorbers Gas-pressurized front shock absorbers

Rear shock absorbers Gas-pressurized rear shock absorbers

Driveability

Brakes

Brake type 4-wheel disc brakes

Ventilated brakes Front and rear ventilated disc brakes

ABS brakes Four channel ABS brakes

Electronic parking brake Electronic parking brake

ABS brakes 4-wheel antilock (ABS) brakes

Post collision braking system Post Collision Braking automatic post-collision braking system

Brake Assistance

Hill start assist Hill Start Assist

Brake assist system Brake assist system

Front Suspension

Front anti-roll Front anti-roll bar

Suspension ride type front Independent front suspension

Suspension type front Strut front suspension

Front Spring

Regular front springs Regular front springs

Springs front Front coil springs

Rear Spring

Springs rear Rear coil springs

Rear springs Regular grade rear springs

Rear Suspension

Prices and content availability as shown are subject to change and should be treated as estimates only. Actual base vehicle, package and option pricing may vary from this estimate because of special local pricing, availability or pricing adjustments not reflected in the dealer's computer system. See salesperson for the most current information.



Prepared by: Chad Welsh

11/05/2025

San Tan Ford | 1429 East Motorplex Loop Gilbert Arizona | 852970410

2025 Maverick AWD SuperCrew 4.5' box 121.1" WB XL (W8B)

Price Level: 560

Selected Equip & Specs (cont'd)

Rear anti-roll Rear anti-roll bar

Suspension ride type rear Independent rear suspension

Steering

Steering Electric power-assist steering system

Speed sensitive steering Speed sensitive power steering

Steering type number of wheels 2-wheel steering system

Suspension type rear Short and long arm rear suspension

Steering type Rack-pinion steering

Driver selectable steering effort Driver selectable steering effort

Exterior

Front Wheels

Front wheels diameter 17"

Front wheels width 7"

Rear Wheels

Rear wheels diameter 17"

Rear wheels width 7"

Front And Rear Wheels

Appearance silver

Material steel

Front Tires

Aspect 65

Diameter 17"

Sidewalls BSW

Speed H

Tread AS

Type P

Width 225mm

Rear Tires

Aspect 65

Diameter 17"

Sidewalls BSW

Speed H

Tread AS

Type P

Width 225mm

Body Exterior

Trailer

* Towing class Class I tow rating

* Towing hitch Trailer hitch

* Towing wiring harness Trailer wiring harness

Towing trailer sway Trailer sway control

Exterior Features

Box style Standard style pickup box

Number of doors 4 doors

Body

Body panels Galvanized steel and aluminum body panels with side impact beams

Prices and content availability as shown are subject to change and should be treated as estimates only. Actual base vehicle, package and option pricing may vary from this estimate because of special local pricing, availability or pricing adjustments not reflected in the dealer's computer system. See salesperson for the most current information.



Prepared by: Chad Welsh

11/05/2025

San Tan Ford | 1429 East Motorplex Loop Gilbert Arizona | 852970410

2025 Maverick AWD SuperCrew 4.5' box 121.1" WB XL (W8B)

Price Level: 560

Selected Equip & Specs (cont'd)

Spare Tire

Spare tire Compact spare tire with steel wheel

Spare tire location Crank-down spare tire

Wheels

Wheel covers Wheel hub covers

Convenience

Technology

Built-in virtual assistant Built-in virtual assistant

Door Locks

Door locks Power door locks with 2 stage unlocking

All-in-one key All-in-one remote fob and ignition key

Tailgate control Manual tailgate/rear door lock

Keyfob door locks Keyfob activated door locks

Auto door locks Auto-locking doors

Cruise Control

Cruise control Cruise control with steering wheel mounted controls

Rear View Mirror

Day/Night rearview mirror Day/Night rearview mirror

Exterior Mirrors

Folding door mirrors Manual folding door mirrors

Front Side Windows

First-row windows Power first-row windows

Floor Console

Floor console Full floor console

Floor console storage Covered floor console storage

Overhead Console

Overhead console Mini overhead console

Overhead console storage Overhead console storage

Driver Visor

Visor driver mirror Driver visor mirror

Visor driver expandable coverage Driver visor with expandable coverage

Passenger Visor

Visor passenger mirror Passenger visor mirror

Visor passenger expandable coverage Passenger visor with expandable coverage

Power Outlets

12V power outlets 1 12V power outlet

Pedals

Driver foot rest Driver foot rest

Prices and content availability as shown are subject to change and should be treated as estimates only. Actual base vehicle, package and option pricing may vary from this estimate because of special local pricing, availability or pricing adjustments not reflected in the dealer's computer system. See salesperson for the most current information.



Prepared by: Chad Welsh

11/05/2025

San Tan Ford | 1429 East Motorplex Loop Gilbert Arizona | 852970410

2025 Maverick AWD SuperCrew 4.5' box 121.1" WB XL (W8B)

Price Level: 560

Selected Equip & Specs (cont'd)

Rear Windshield

Rear windshield Fixed rear windshield

Storage

Door bins front Driver and passenger door bins

Number of beverage holders 12 beverage holders

Beverage holders rear Rear beverage holders

Dashboard storage Dashboard storage

Under seat tray rear Rear under seat tray

Door bins rear Rear door bins

Beverage holders Front beverage holders

Glove box Standard glove box

Seatback storage pockets 1 seatback storage pocket

Windows Feature

One-touch down window Driver one-touch down window

Windows Rear Side

Second-row windows Power second-row windows

Miscellaneous

Trip computer Trip computer

Accessory power Retained accessory power

PRND in IP PRND in IP

Comfort

Climate Control

Climate control Automatic climate control

Voice activated climate control Voice-activated climate control

Cabin air filter Cabin air filter

Rear under seat ductsRear under seat climate control ducts

Headliner

Headliner material Cloth headliner material

Headliner coverage Full headliner coverage

Door Trim

Door panel insert Coloured door panel insert

Floor Trim

Floor covering Full carpet floor covering

Floor mats Carpet front floor mats

Floor coverage Full floor coverage

Second-Row Seat Trim

Rear seat upholstery Cloth rear seat upholstery

Rear seatback upholstery Carpet rear seatback upholstery

Steering Wheel

Steering wheel material Urethane steering wheel

Steering wheel telescopic. Manual telescopic steering wheel

Steering wheel tilt Manual tilting steering wheel

Prices and content availability as shown are subject to change and should be treated as estimates only. Actual base vehicle, package and option pricing may vary from this estimate because of special local pricing, availability or pricing adjustments not reflected in the dealer's computer system. See salesperson for the most current information.



Prepared by: Chad Welsh

11/05/2025

San Tan Ford | 1429 East Motorplex Loop Gilbert Arizona | 852970410

2025 Maverick AWD SuperCrew 4.5' box 121.1" WB XL (W8B)

Price Level: 560

Selected Equip & Specs (cont'd)

Seats and Trim

Seat Capacity

Seating capacity 5

Front Seats

Driver seat direction Driver seat with 6-way directional controls

Driver seat fore/aft control Manual driver seat fore/aft control

Split front seats Bucket front seats

Passenger seat fore/aft control Manual passenger seat fore/aft control

Front head restraint control Manual front seat head restraint control

Reclining driver seat Manual reclining driver seat

Height adjustable driver seat Manual height adjustable driver seat

Passenger seat direction Front passenger seat with 4-way directional controls

Reclining passenger seat Manual reclining passenger seat

Front head restraints Height adjustable front seat head restraints

Armrests front center Front seat center armrest

Rear Seats

Bench seats Rear bench seat

Folding second-row seats Full folding rear seats

Rear seat folding position Fold forward rear seatback

Number of rear head restraints 3 rear seat head restraints

Rear seats fixed or removable Fixed rear seats

Rear seat direction Front facing rear seat

Rear head restraints Fixed rear head restraints

Front Seat Trim

Front seat upholstery Cloth front seat upholstery

Front seatback upholstery Cloth front seatback upholstery

Interior Accents

Interior accents Other interior accents

Entertainment Features

Displays

Primary touchscreen display Primary touchscreen display

Primary display size 13.2 inch primary display

Number of first-row displays 2 total number of 1st row displays

Radio Features

External memory External memory control

RDS Radio data system (RDS)

Seek scan Seek scan

Speakers

Speakers Standard grade speakers

Speakers number 6

Prices and content availability as shown are subject to change and should be treated as estimates only. Actual base vehicle, package and option pricing may vary from this estimate because of special local pricing, availability or pricing adjustments not reflected in the dealer's computer system. See salesperson for the most current information.



Prepared by: Chad Welsh

11/05/2025

San Tan Ford | 1429 East Motorplex Loop Gilbert Arizona | 852970410

2025 Maverick AWD SuperCrew 4.5' box 121.1" WB XL (W8B)

Price Level: 560

Selected Equip & Specs (cont'd)

Audio Features

Steering mounted audio control Steering wheel
mounted audio controls
Voice activated audio... SYNC 4 with Enhanced Voice
Recognition voice activated audio controls

Speed sensitive volume Speed sensitive volume

Wireless streaming Wireless audio streaming

Lighting, Visibility and Instrumentation

Instrument Panel Trim

Panel insert Coloured instrument panel insert

Instrumentation

Trip odometer Trip odometer

Instrumentation display Digital/analog instrumentation
display

Configurable instrumentation gauges Configurable
instrumentation gauges

Instrumentation Displays

Speedometer Redundant digital speedometer
Driver information center Driver information center
Compass Compass

Temperature display Exterior temperature display
Clock Digital clock
Eco feedback SmartGauge with EcoGuide ECO
feedback display gauge

Instrumentation Gauges

* **Tachometer** **Tachometer**

Engine/electric motor temperature
gauge Engine/electric motor temperature gauge

Gauge cluster display size (inches) 8.00

Instrumentation Warnings

Engine temperature warning Engine temperature
warning
Low fuel warning Low fuel warning
Low brake fluid warning Low brake fluid warning
Headlights on reminder Headlights on reminder
Bulb warning Bulb failure warning
Trunk warning Rear cargo ajar warning

Oil pressure warning Oil pressure warning

Low washer fluid warning ... Low washer fluid warning
Battery charge warning Battery charge warning
Key in vehicle warning Key in vehicle warning
Door ajar warning Door ajar warning
Service interval warning Intelligent Oil-Life Monitor
service interval indicator

Low tire pressure warning Tire specific low air
pressure warning

Glass

Tinted windows Deep tinted windows

Headlights

Headlights LED low and high beam headlights
Auto headlights Autolamp auto on/off headlight control

Headlight type Reflector headlights
Multiple headlights Multiple enclosed headlights

Prices and content availability as shown are subject to change and should be treated as estimates only. Actual base vehicle, package and option pricing may vary from this estimate because of special local pricing, availability or pricing adjustments not reflected in the dealer's computer system. See salesperson for the most current information.



Prepared by: Chad Welsh

11/05/2025

San Tan Ford | 1429 East Motorplex Loop Gilbert Arizona | 852970410

2025 Maverick AWD SuperCrew 4.5' box 121.1" WB XL (W8B)

Price Level: 560

Selected Equip & Specs (cont'd)

Delay off headlights Delay-off headlights

DRL preference setting DRL preference setting

Front Windshield

Wipers Fixed interval front windshield wipers

Interior Lighting

Illuminated entry Illuminated entry

Front reading lights Front reading lights

Lights

Running lights LED daytime running lights

High mount stop light High mounted center stop light

Auto high-beam headlights Auto High Beam auto high-beam headlights

Variable panel light Variable instrument panel light

Interior courtesy lights Fade interior courtesy lights

Pickup box cargo light Pickup box cargo light

Technology and Telematics

Connectivity

Handsfree Bluetooth handsfree wireless device connectivity

Emergency SOS SYNC 4 911 Assist emergency SOS system via mobile device

Smart device integration. Apple CarPlay/Android Auto smart device mirroring

Internet Access

Internet access FordPass Connect 5G mobile hotspot internet access

USB Ports

USB ports 3 USB ports

Safety and Security

Airbags

Front impact airbag driver Driver front impact airbag

Front impact airbag passenger Passenger front impact airbag

Front side impact airbag driver Seat mounted side impact driver airbag

Occupancy sensor Airbag occupancy sensor

Number of airbags 7 airbags

Knee airbag Driver side knee airbag

Front side impact airbag passenger Seat mounted side impact front passenger airbag

Overhead airbags. Safety Canopy System curtain first and second-row overhead airbags

Seatbelts

3-point seatbelt Rear seat center 3-point seatbelt

Seatbelt pretensioners Front and rear seatbelt pretensioners

Height adjustable seatbelts Front height adjustable seatbelts

Seatbelt pretensioners number 4 seatbelt pretensioners

Prices and content availability as shown are subject to change and should be treated as estimates only. Actual base vehicle, package and option pricing may vary from this estimate because of special local pricing, availability or pricing adjustments not reflected in the dealer's computer system. See salesperson for the most current information.



Prepared by: Chad Welsh

11/05/2025

San Tan Ford | 1429 East Motorplex Loop Gilbert Arizona | 852970410

2025 Maverick AWD SuperCrew 4.5' box 121.1" WB XL (W8B)

Price Level: 560

Selected Equip & Specs (cont'd)

Security System

Immobilizer SecuriLock immobilizer

Remote panic alarm Remote panic alarm

Active Driving Assistance

Lane departure Lane-Keeping Aid

Forward collision warning Pre-Collision Assist with Automatic Emergency Braking (AEB) forward collision mitigation

Pedestrian detection Pre-Collision Assist with Pedestrian Detection

Cameras

Rear camera Rear mounted camera

Traction Control

Electronic stability control AdvanceTrac w/Roll Stability Control electronic stability control system with anti-rollover

Occupant Safety

Child door locks Manual rear child safety door locks

Prices and content availability as shown are subject to change and should be treated as estimates only. Actual base vehicle, package and option pricing may vary from this estimate because of special local pricing, availability or pricing adjustments not reflected in the dealer's computer system. See salesperson for the most current information.



Prepared by: Chad Welsh

11/05/2025

San Tan Ford | 1429 East Motorplex Loop Gilbert Arizona | 852970410

2025 Maverick AWD SuperCrew 4.5' box 121.1" WB XL (W8B)

Price Level: 560

Warranty

Standard Warranty

Basic Warranty

Basic warranty 36 months/36,000 miles

Powertrain Warranty

Powertrain warranty 60 months/60,000 miles

Corrosion Perforation

Corrosion perforation warranty 60 months/unlimited

Roadside Assistance Warranty

Roadside warranty 60 months/60,000 miles

Hybrid/Electric Components Warranty

Hybrid/electric components warranty 96 months/100,000 miles

Prices and content availability as shown are subject to change and should be treated as estimates only. Actual base vehicle, package and option pricing may vary from this estimate because of special local pricing, availability or pricing adjustments not reflected in the dealer's computer system. See salesperson for the most current information.