

# Regional Strategic Transportation Safety Plan Update

Lake Havasu City Council  
Public Meeting  
July 9, 2024



## Project Management Team

- Roland Hulse, WACOG
- Sarah Lojewski, LHMPO
- Josh Barger, Greenlight TE
- Mike Blankenship, Greenlight TE

## Oversight:

- WACOG & LHMPO Technical Advisory Committees
- Additional input from stakeholders

Previous LHMPO Safety Plan Completed in 2017

Crashes In Past 5 Years (2018-2022):

**26 people died**

**1,244 people were injured**

**2,913 traffic crashes**

**Save Lives!**

## The previous plan's vision and goal

- **Vision:** "Toward Zero Deaths by Reducing Crashes for a Safer Lake Havasu Region"
- **Goal:** "Reduce the number of fatalities and serious injuries in the Lake Havasu region by 3 to 7 percent during the next 5 years"

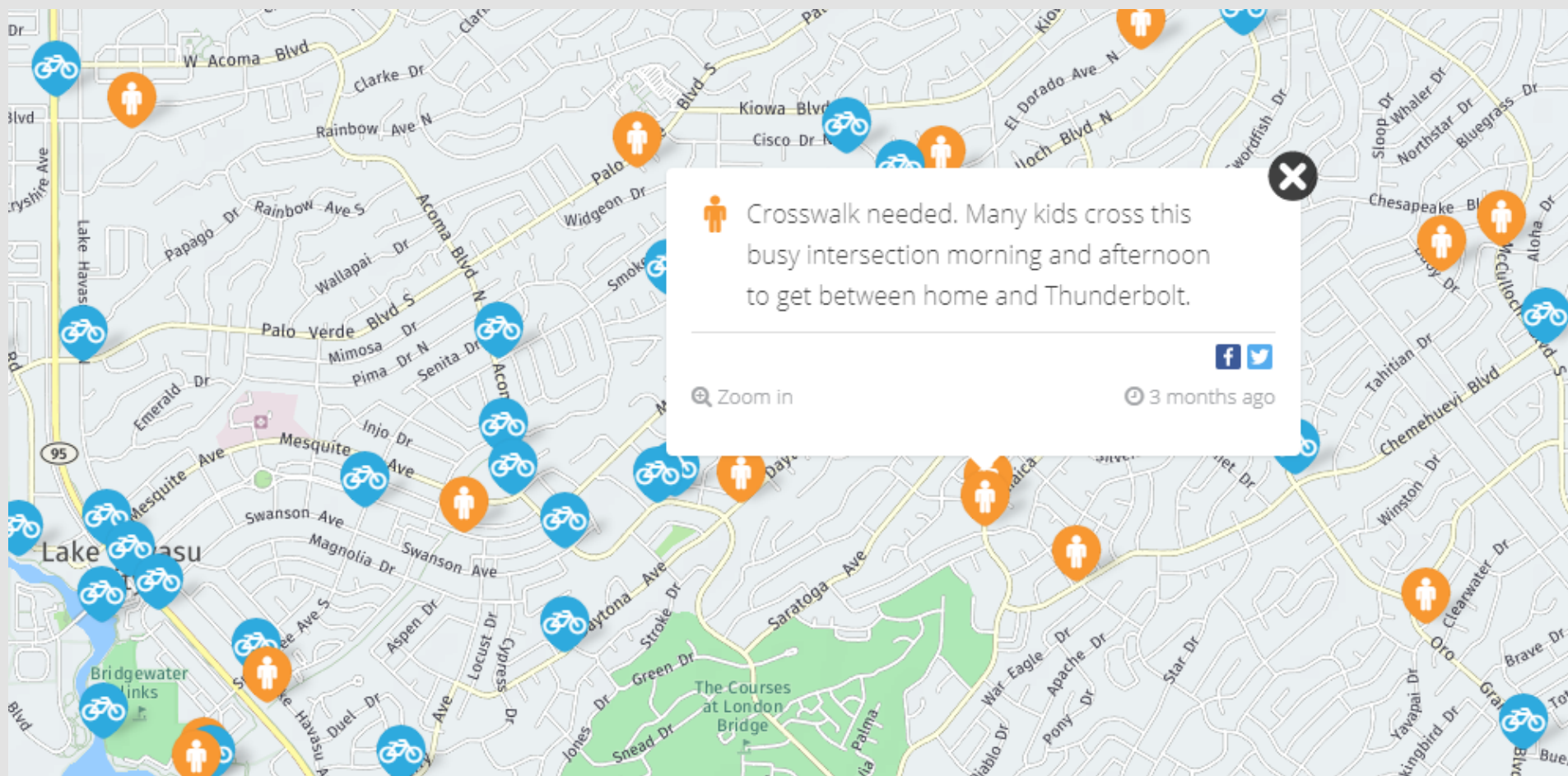
(English & Spanish)



Scan to participate  
in our survey and interactive  
map exercise!



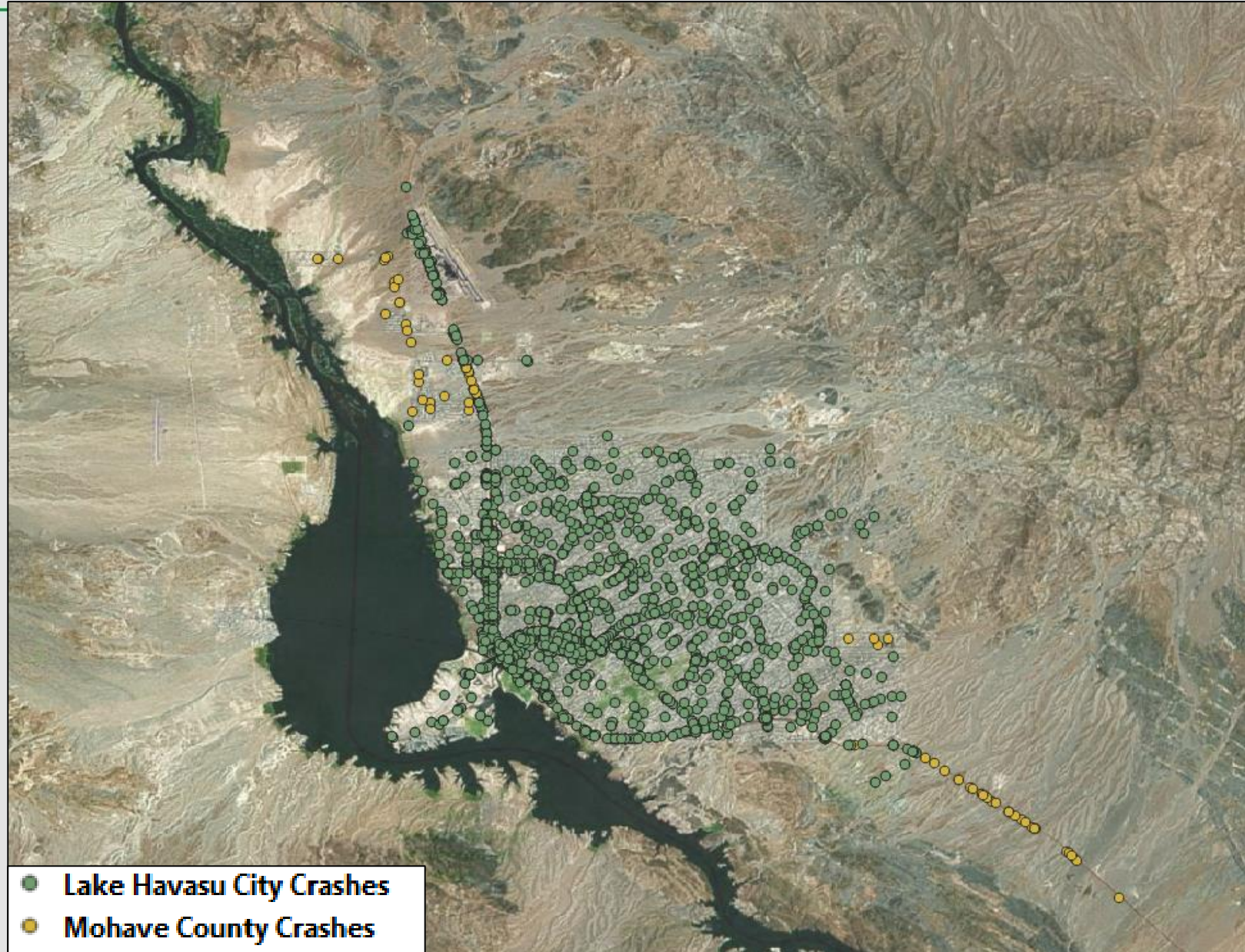
Scan to participate  
in our survey and interactive  
map exercise!



# Crash Data Analysis

ADOT Crash Data from 2018 to 2022

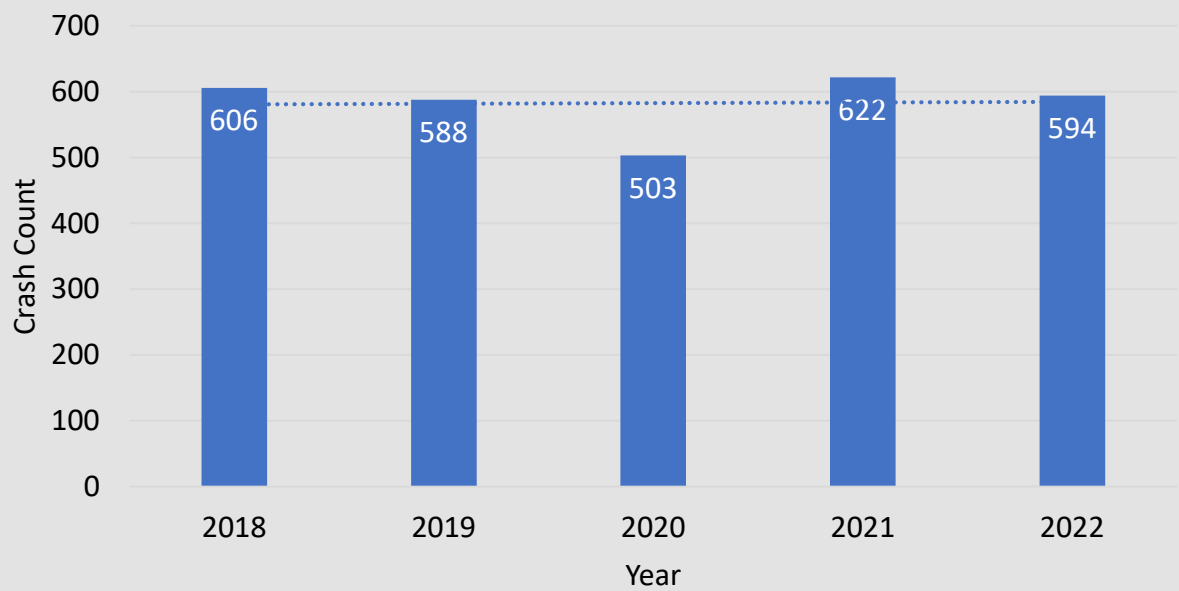
# Crash Analysis





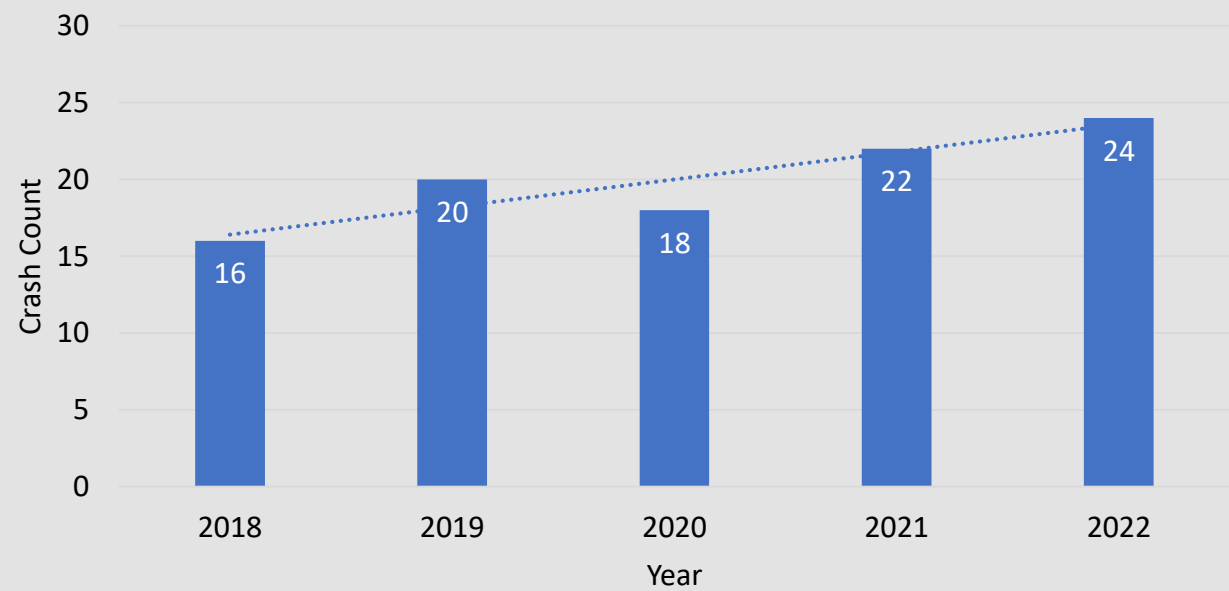
# Crash Analysis

### LHMPO Crash Trend



Crashes Linear (Crashes)

### Mohave County Crash Trend



Crashes Linear (Crashes)

*Source: ADOT crash data from 2018 to 2022*

# Crash Analysis

Crash Manner	No Injury	Possible Injury	Suspected Minor Injury	Suspected Serious Injury	Fatal	Grand Total
Angle (Front To Side)(Other Than Left Turn)	445	89	128	25	1	688
Head On	30	6	20	10	4	70
Left Turn	199	34	56	13	3	305
Other	80	13	30	11	3	137
Rear End	520	132	95	14	4	765
Rear to Rear	2			1		3
Rear To Side	10					10
Sideswipe Opposite Direction	41	5	3	5	1	55
Sideswipe Same Direction	294	13	15	4		326
Single Vehicle	316	41	118	40	8	523
U Turn	7	3	1			11
Unknown	18	1	1			20
<b>Grand Total</b>	<b>1,962</b>	<b>337</b>	<b>467</b>	<b>123</b>	<b>24</b>	<b>2,913</b>

## LHMPO Focus Area Summary

Focus Area	Crashes	% of Crashes	% of State Crashes	Serious Injury	% of Crashes	% of State Crashes	Fatal	% of Crashes	% of State Crashes
Unrestrained/ Unknown	507	17.4	16.1	44	35.8	29.2	13	54.2	45.3
Motorcycle	117	4.0	1.6	30	24.4	14.8	7	29.2	13.3
Intersection	1,476	50.7	47.5	52	42.3	49.2	7	29.2	43.6
Lane Departure	662	22.7	16.4	41	33.3	28.6	9	37.5	31.3
Pedestrian	45	1.5	1.4	9	7.3	11.7	2	8.3	23.3
Bicycle	34	1.2	0.9	10	8.1	4.7	0	0.0	3.5
Nighttime	623	21.4	25.6	48	39.0	35.2	9	37.5	47.9
Speeding/ Aggressive Driving	884	30.3	33.1	44	35.8	29.4	10	41.7	26.7
Impaired Driving	373	12.8	8.5	35	28.5	19.1	4	16.7	35.6
Young Driver	964	33.1	37.2	12	9.8	30.6	3	12.5	23.8
Older Driver	1,167	40.1	17.2	11	8.9	18.6	2	8.3	20.0
Weather	76	2.6	5.6	5	4.1	5.6	0	0.0	4.8
Animal	19	0.7	1.6	1	0.8	0.4	0	0.0	0.3
Distracted Driving	367	12.6	8.1	14	11.4	7.2	0	0.0	19.3

## LHMPO Recommended Emphasis Areas

- Restraint Use
- Motorcycle
- Intersection
- Lane Departure
- Nighttime
- Speeding and Aggressive Driving
- Distracted Driving

# Network Screening

# Top Intersections

UCG Intersection Name	No Injury	Possible Injury	Suspected Minor Injury	Suspected Serious Injury	Fatal
Acoma Blvd S & SR-95	32	10	10	2	1
Kiowa Blvd & SR-95	33	5	7	1	
Lake Havasu Ave & McCulloch Blvd	36	4	3		
Lake Havasu Ave & Mesquite Ave	31	6	3	1	
Mesquite Ave & SR-95	23	6	4	1	
N Lake Havasu Ave & S Palo Verde Blvd	24	7	2		1
Mulberry Ave & SR-95	20	7	2	1	
Palo Verde Blvd North & SR-95	18	3	5	2	
Acoma Blvd & Lake Havasu Ave	19	6	3		
Industrial Blvd & SR-95	17	7	3		
SR-95 & Swanson Ave	14	4	6	1	
Palo Verde Blvd South & SR-95	19	3	2	1	
Acoma Blvd & Mesquite Ave	16	3	3		
Smoketree Ave & Swanson Ave	11	5	3	1	
Maricopa Ave & Oro Grande Blvd	15	3	1	1	
Smoketree Ave & SR-95	11	1	6	1	
Acoma Blvd & McCulloch Blvd	13	2	3	1	
Mesquite Ave & Riviera Blvd	13	1	1	3	
Acoma Blvd & Smoketree Ave	16		2		
Kiowa Blvd & Palo Verde Blvd	12		4	1	

# Top Segments

UCG On Road	Incident Crossing Feature	No Injury	Possible Injury	Suspected Minor Injury	Suspected Serious Injury	Fatal
SR-95	M184	21	7	6		
Lake Havasu Ave	Mesquite Ave	18	5	3		
SR-95	M186	13	1	7	2	2
SR-95	M182	16	4	2		
SR-95	M185	15	3	1		
SR-95	M183	14	2		2	
SR-95	M181	12	4	1		
SR-95	M180	9	3	3		
SR-95	M187	10	1	1	2	
McCulloch Blvd	Mulberry Ave	11	2			
Lake Havasu Ave	Sunflower Dr	9		2	1	
SR-95	M174	10		1	1	
London Bridge Rd	SR-95	9	1	1		
Lake Havasu Ave	Bahama Ave	6	1	2	1	
SR-95	M189	6	1	2	1	
McCulloch Blvd	N Lake Havasu Ave	8	1	1		
Mesquite Ave	Lake Havasu Ave	8	1	1		
McCulloch Blvd	N Acoma Blvd	9	1			
McCulloch Blvd	Querio Dr	7		1	1	

# Contact Information

- Sarah Lojewski – LHMPO Administrative Specialist II
  - (928) 453-2823
  - lojewskis@lhcaz.gov
  
- Josh Barger, PE – Greenlight Project Engineer
  - (928) 255-9874
  - joshb@greenlightte.com



Scan to participate  
in our survey and interactive  
map exercise!