

**EXHIBIT "A"**  
**EASEMENT ABANDONMENT**  
**ON**

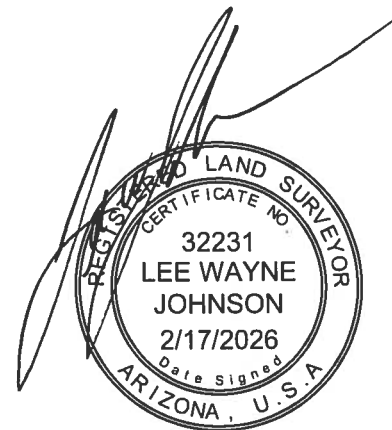
LOT 11, BLOCK 7 OF TRACT 137, LAKE HAVASU CITY,  
BEING A SUBDIVISION OF A PORTION OF SECTION 13, TOWNSHIP 13 NORTH,  
RANGE 20 WEST, GILA & SALT RIVER MERIDIAN, MOHAVE COUNTY, ARIZONA.

A PORTION OF LOT 11, BLOCK 7 OF TRACT 137, LAKE HAVASU CITY,  
BEING A SUBDIVISION OF A PORTION OF SECTION 13, TOWNSHIP 13 NORTH,  
RANGE 20 WEST, GILA & SALT RIVER MERIDIAN, MOHAVE COUNTY, ARIZONA.

BEING MORE PARTICULARLY DESCRIBED AS FOLLOWS:

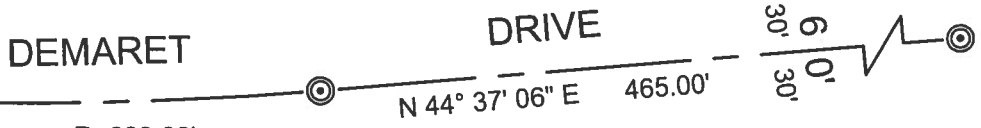
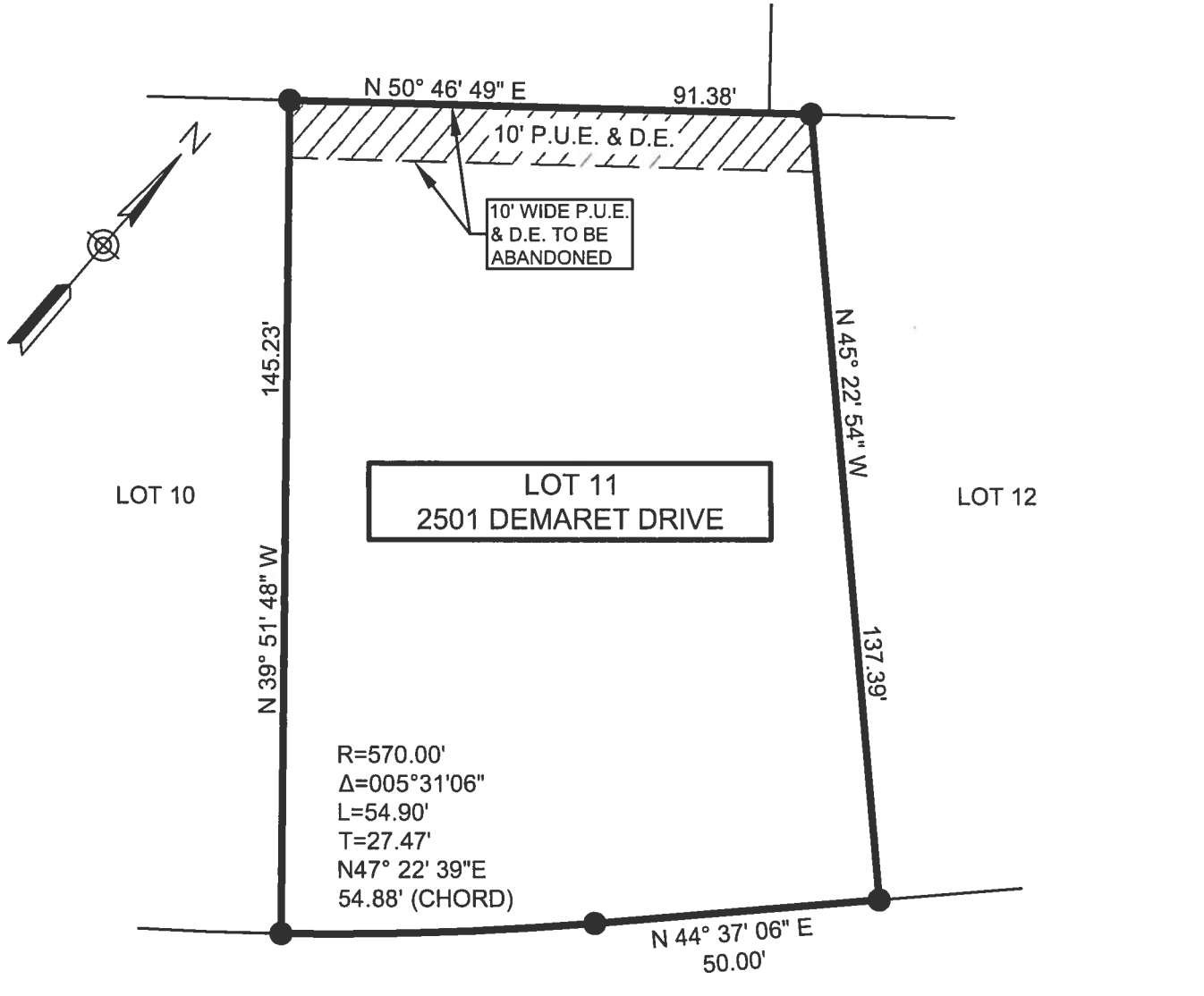
THE ENTIRE EXISTING 10-FOOT WIDE PUBLIC UTILITY EASEMENT AND DRAINAGE  
EASEMENT RUNNING ALONG THE REAR PROPERTY LINE OF SAID LOT 11, BLOCK  
7 OF TRACT 137.

THE ABOVE DESCRIBED AREA CONTAINS APPROXIMATELY 919 S.F.

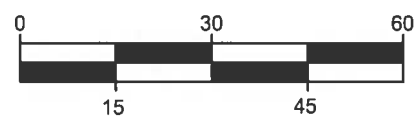


# EXHIBIT "B" EASEMENT ABANDONMENT ON

LOT 11, BLOCK 7 OF TRACT 137, LAKE HAVASU CITY,  
BEING A SUBDIVISION OF A PORTION OF SECTION 13, TOWNSHIP 13 NORTH,  
RANGE 20 WEST, GILA & SALT RIVER MERIDIAN, MOHAVE COUNTY, ARIZONA.



R=600.00'  
Δ=009°20'17"  
L=97.79'  
T=49.00'  
N49° 17' 14"E  
97.68' (CHORD)



SCALE: 1"=30'

ACCURATE PROFESSIONAL  
LAND SURVEYING, INC.  
P.O. BOX 3722  
LAKE HAVASU CITY, AZ 86405  
(928) 505-2570

JOB No.  
2026-0065  
PAGE 2 OF 2