

EXHIBIT A

EASEMENT VACATION ON LOT 29, BLOCK 5, TRACT 136
IN THE SE1/4 SECTION 14, T13N, R20W, G&SRM, LAKE HAVASU CITY, MOHAVE COUNTY, ARIZONA

DESCRIPTION - PROPOSED EASEMENT VACATION

The northwesterly 8 feet of the southwesterly 92 feet of the public utility and drainage easement on Lot 29 in Block 5 of Tract 136, Lake Havasu City, according to the plat thereof on file with the Mohave County recorder.



ABUNDANCE LAND SERVICES, LLC

PO Box 1867, Lake Havasu City, AZ 86405

riley@abundancelands.net

406-546-2264



C:\Users\Dakota Land\Dakota Land Consulting\Dakota Land

Consulting - General\ALS 00100\102 APX\02 2140

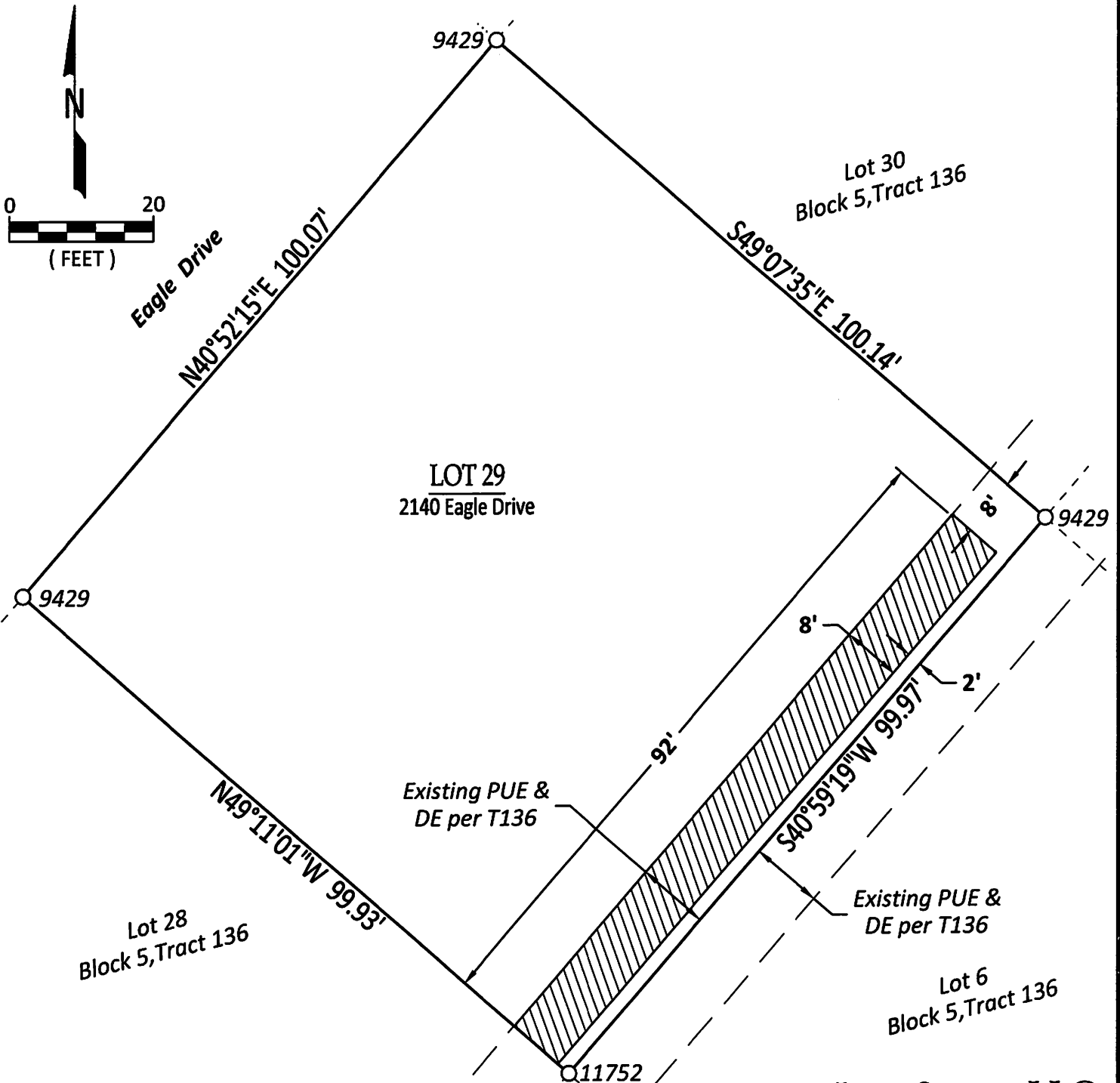
Eagle\CAD\Exbt-2140 Eagle-Esmt Vacated.dwg

Plotted 9/12/24

Page 1 of 2

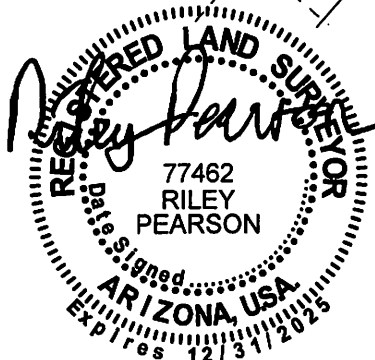
EXHIBIT B

EASEMENT VACATION ON LOT 29, BLOCK 5, TRACT 136
IN THE SE1/4 SECTION 14, T13N, R20W, G&SRM, LAKE HAVASU CITY, MOHAVE COUNTY, ARIZONA



LEGEND

- PLASTIC CAP AS NOTED PLAT OF TRACT TRACT T136 136, LAKE HAVASU CITY, REC. No. 155135, MCR
- PROPOSED EASEMENT ABANDONMENT AREA



ABUNDANCE LAND SERVICES, LLC
PO Box 1867, Lake Havasu City, AZ 86405
riley@abundancelands.net
406-546-2264

