

EXHIBIT "A"
EASEMENT ABANDONMENT
ON

LOT 5, BLOCK 7 OF TRACT 136, LAKE HAVASU CITY,
BEING A SUBDIVISION OF A PORTION OF SECTION 14, TOWNSHIP 13 NORTH,
RANGE 20 WEST, GILA & SALT RIVER MERIDIAN, MOHAVE COUNTY, ARIZONA.

A PORTION OF LOT 5, BLOCK 7 OF TRACT 136, LAKE HAVASU CITY,
BEING A SUBDIVISION OF A PORTION OF SECTION 14, TOWNSHIP 13 NORTH,
RANGE 20 WEST, GILA & SALT RIVER MERIDIAN, MOHAVE COUNTY, ARIZONA.

BEING MORE PARTICULARLY DESCRIBED AS FOLLOWS:

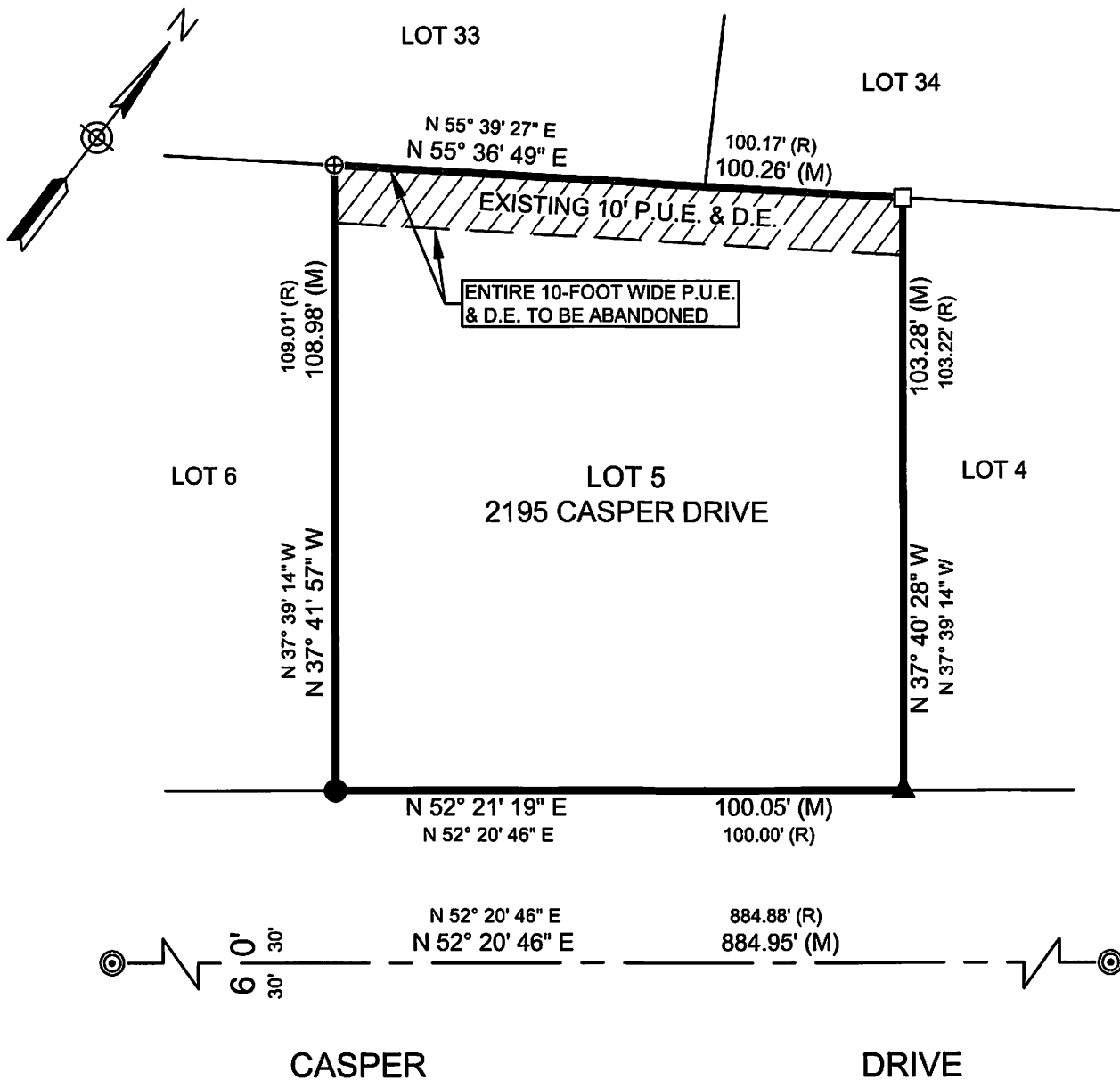
THE ENTIRE 10-FOOT WIDE PUBLIC UTILITY EASEMENT AND DRAINAGE
EASEMENT RUNNING ALONG THE REAR PROPERTY LINE OF SAID LOT 5.

THE ABOVE DESCRIBED AREA CONTAINS APPROXIMATELY 1,003 S.F.

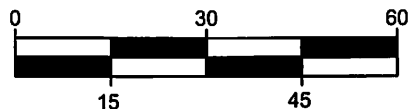


EXHIBIT "B" EASEMENT ABANDONMENT ON

LOT 5, BLOCK 7 OF TRACT 136, LAKE HAVASU CITY,
BEING A SUBDIVISION OF A PORTION OF SECTION 14, TOWNSHIP 13 NORTH,
RANGE 20 WEST, GILA & SALT RIVER MERIDIAN, MOHAVE COUNTY, ARIZONA.



ACCURATE PROFESSIONAL
LAND SURVEYING, INC.
P.O. BOX 3722
LAKE HAVASU CITY, AZ 86405
(928) 505-2570



SCALE: 1"=30'

JOB No.
2024-0340
PAGE 2 OF 2